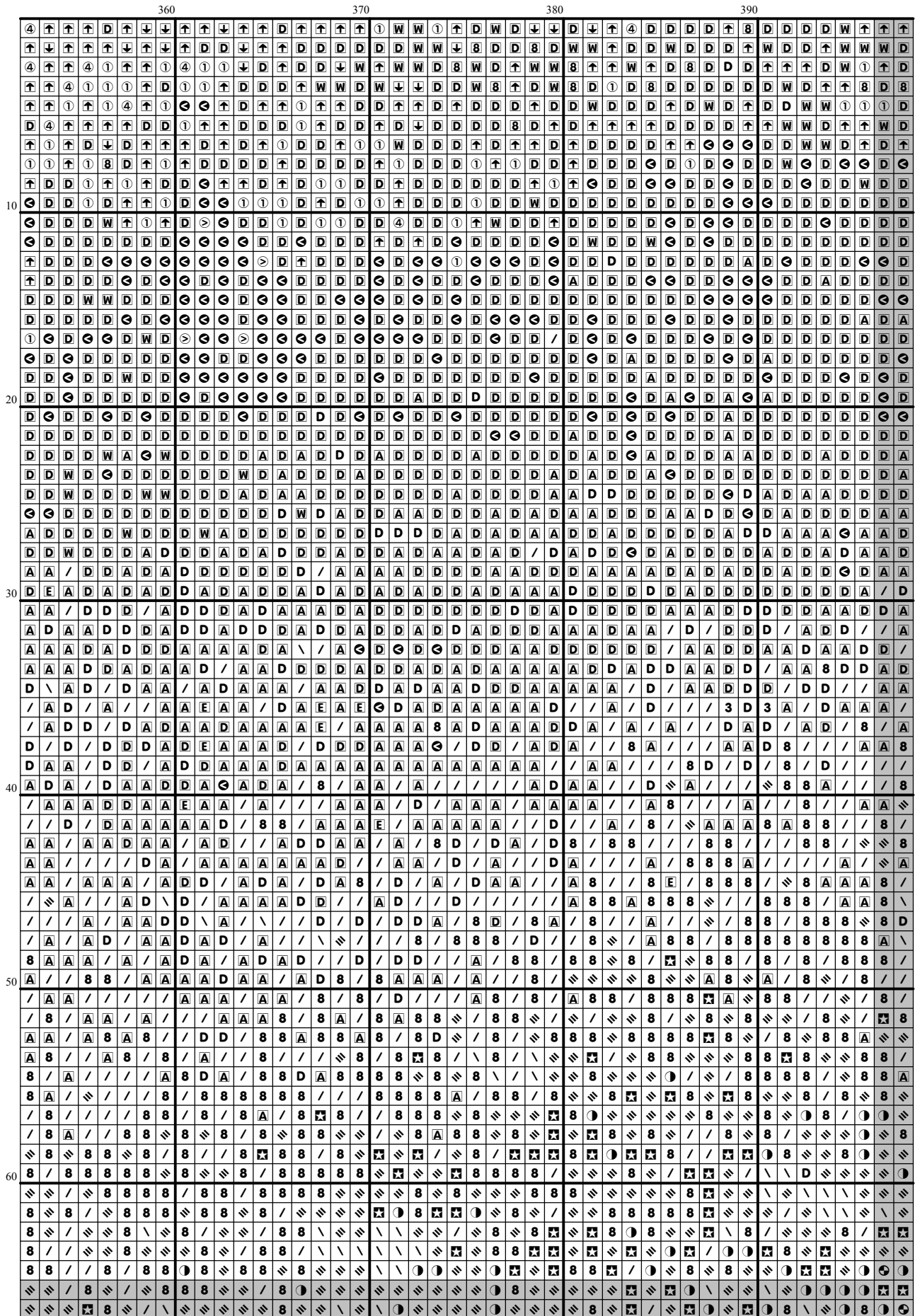
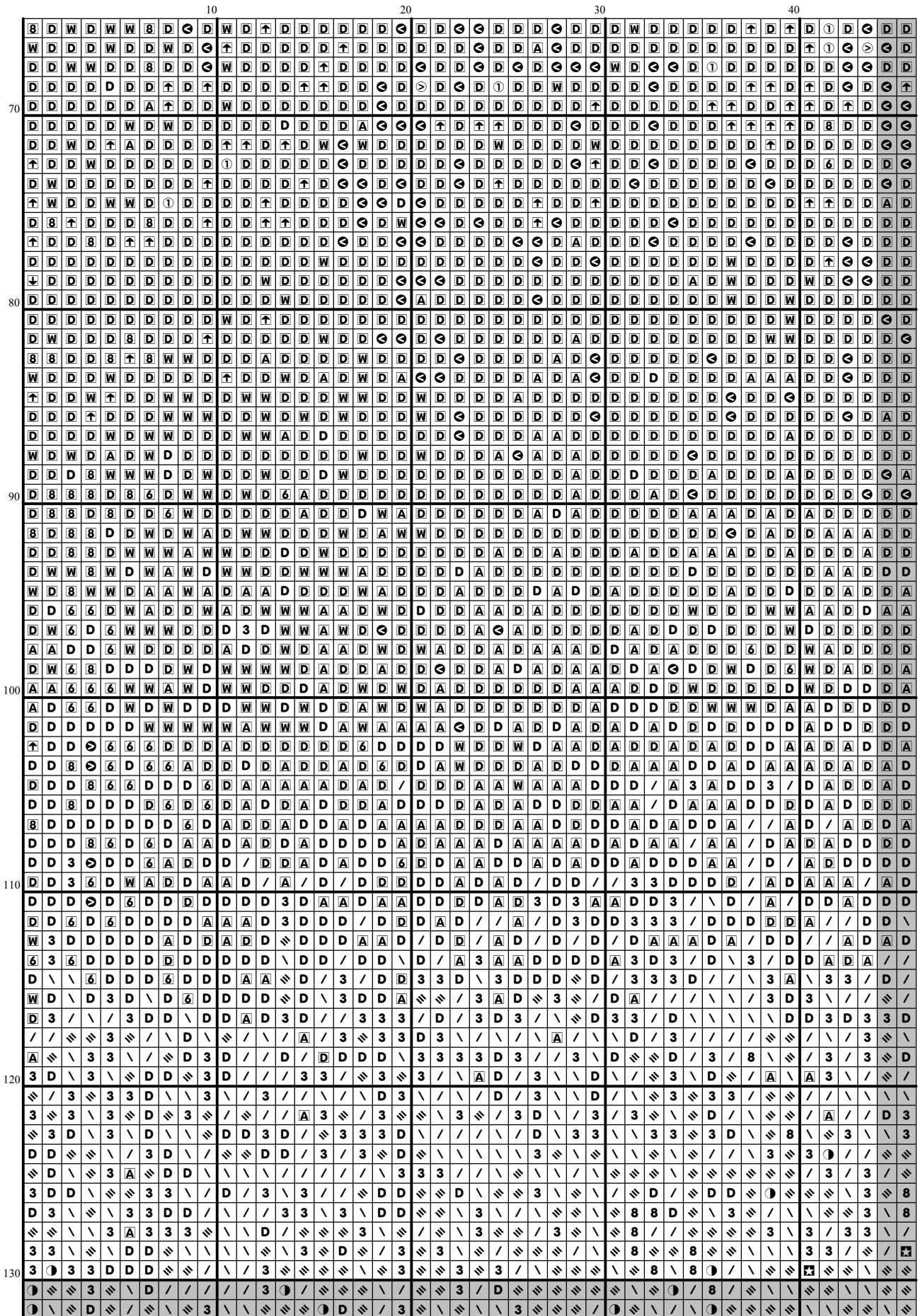
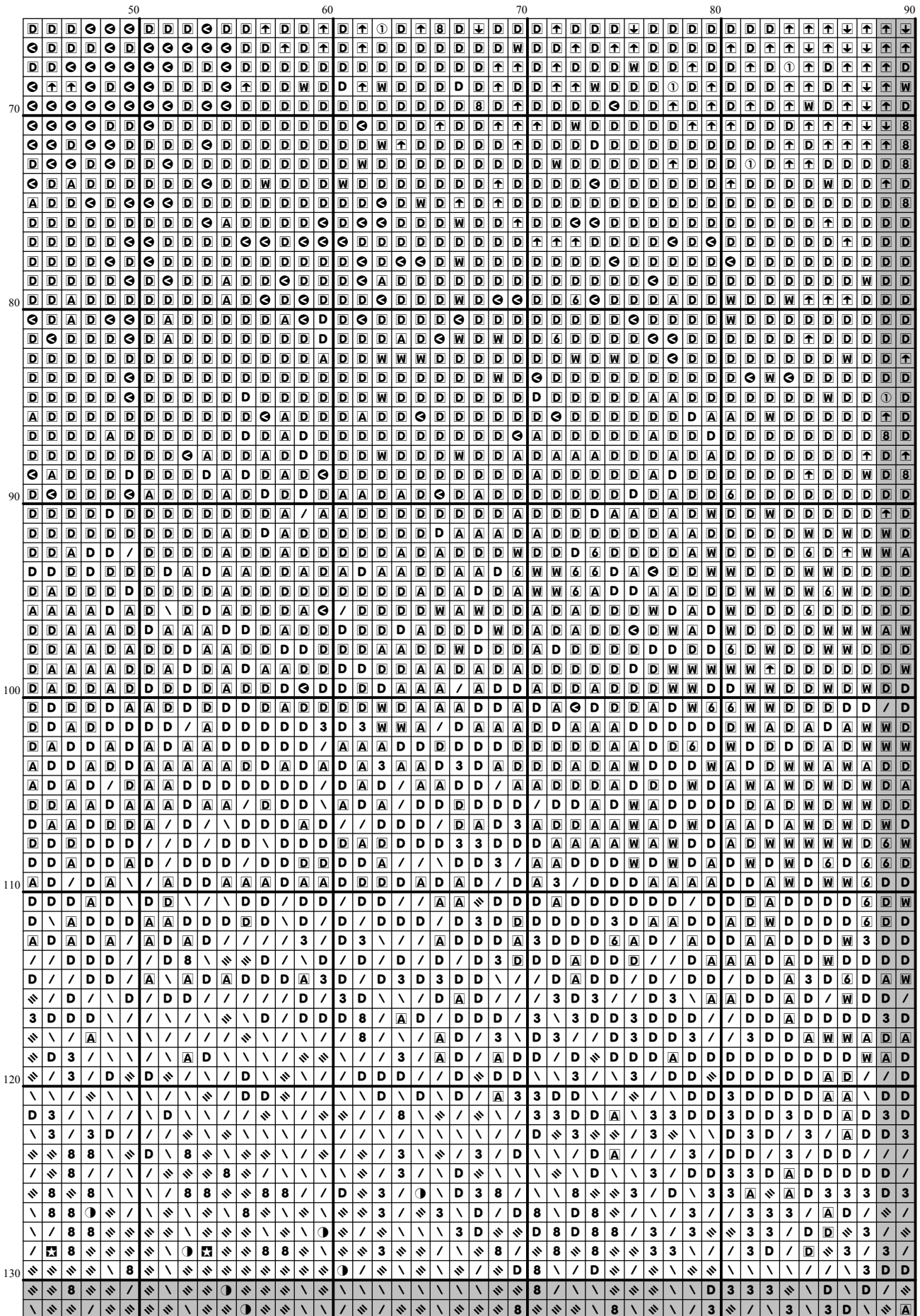


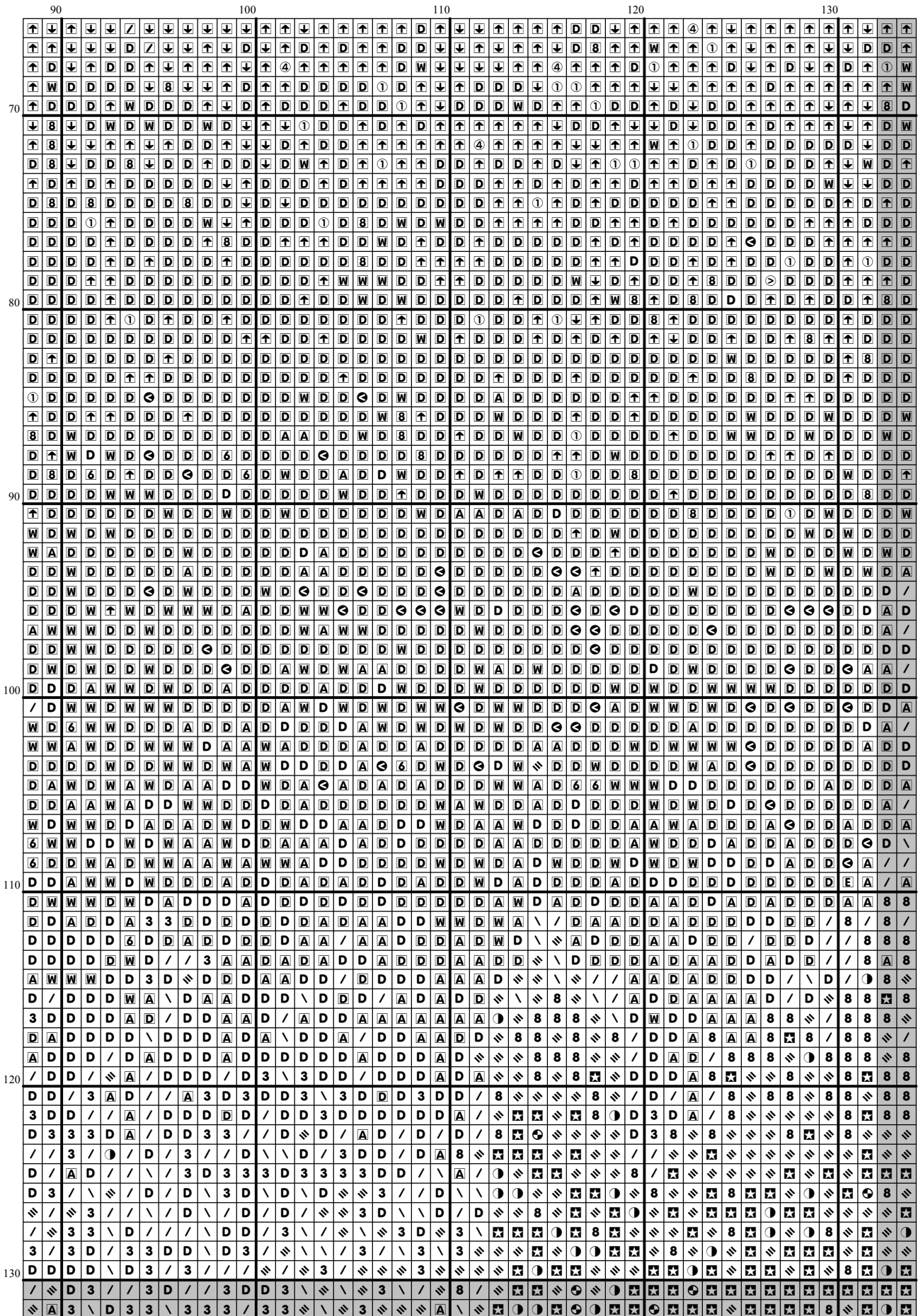
[illegible]

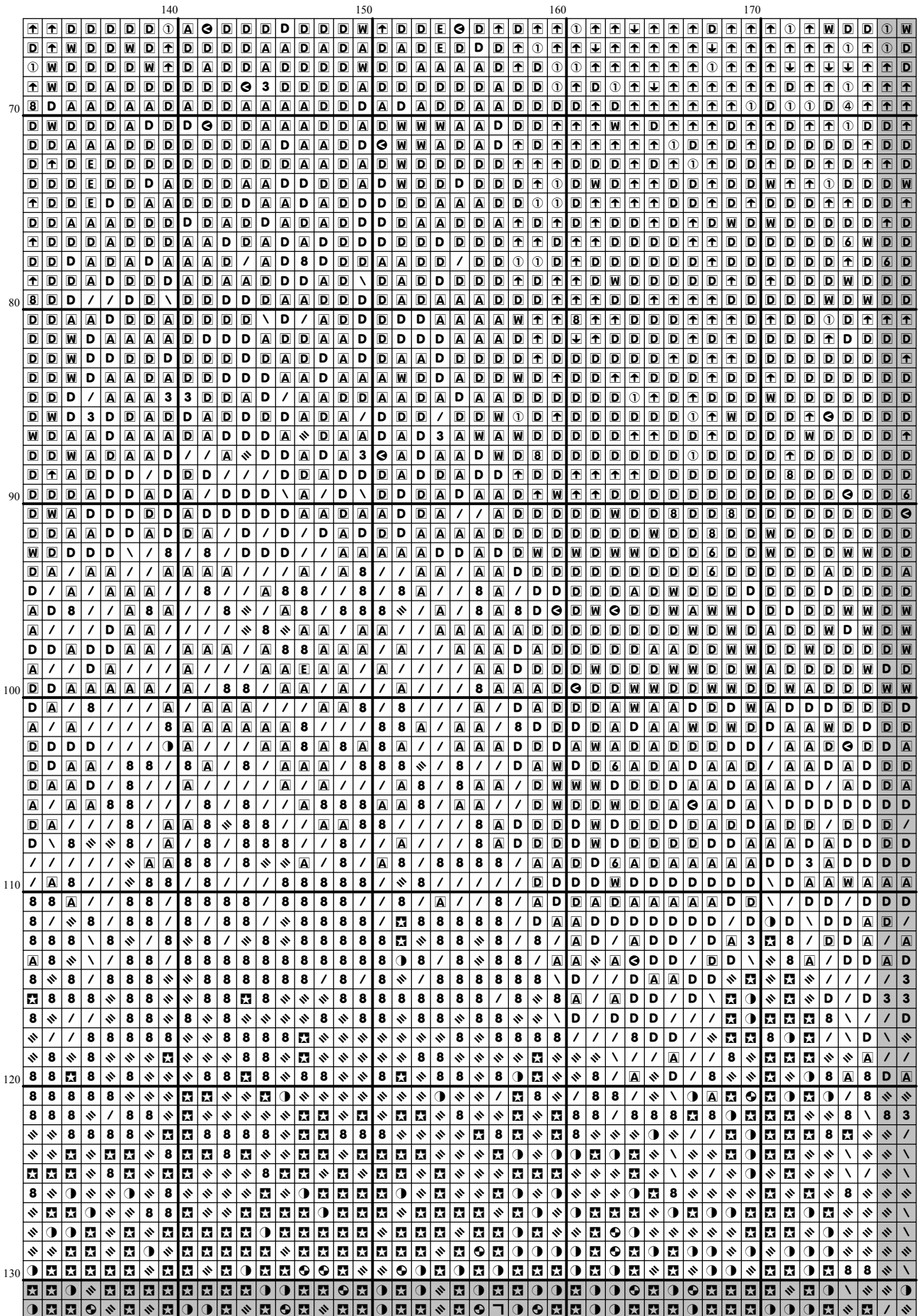


[illegible]

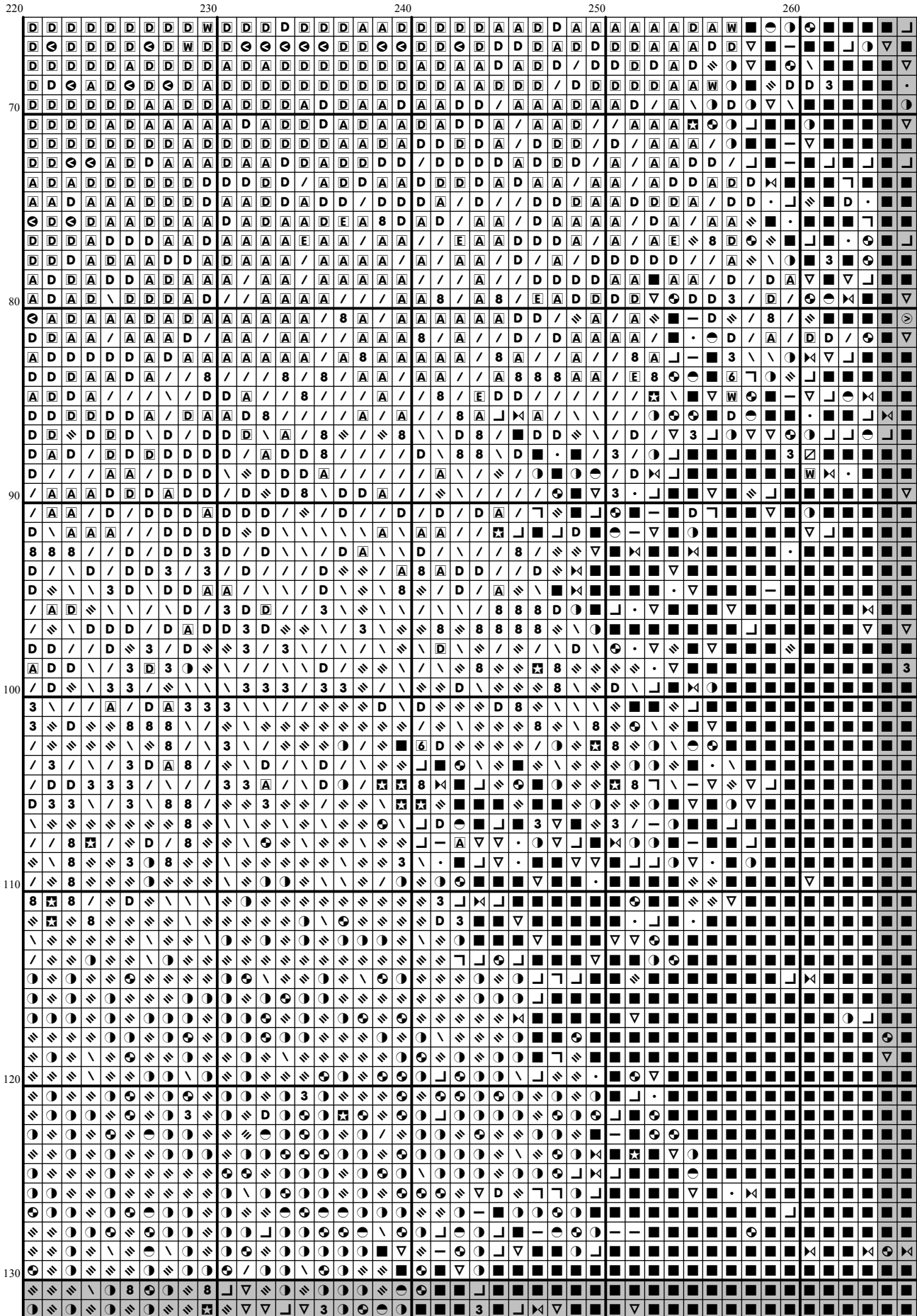


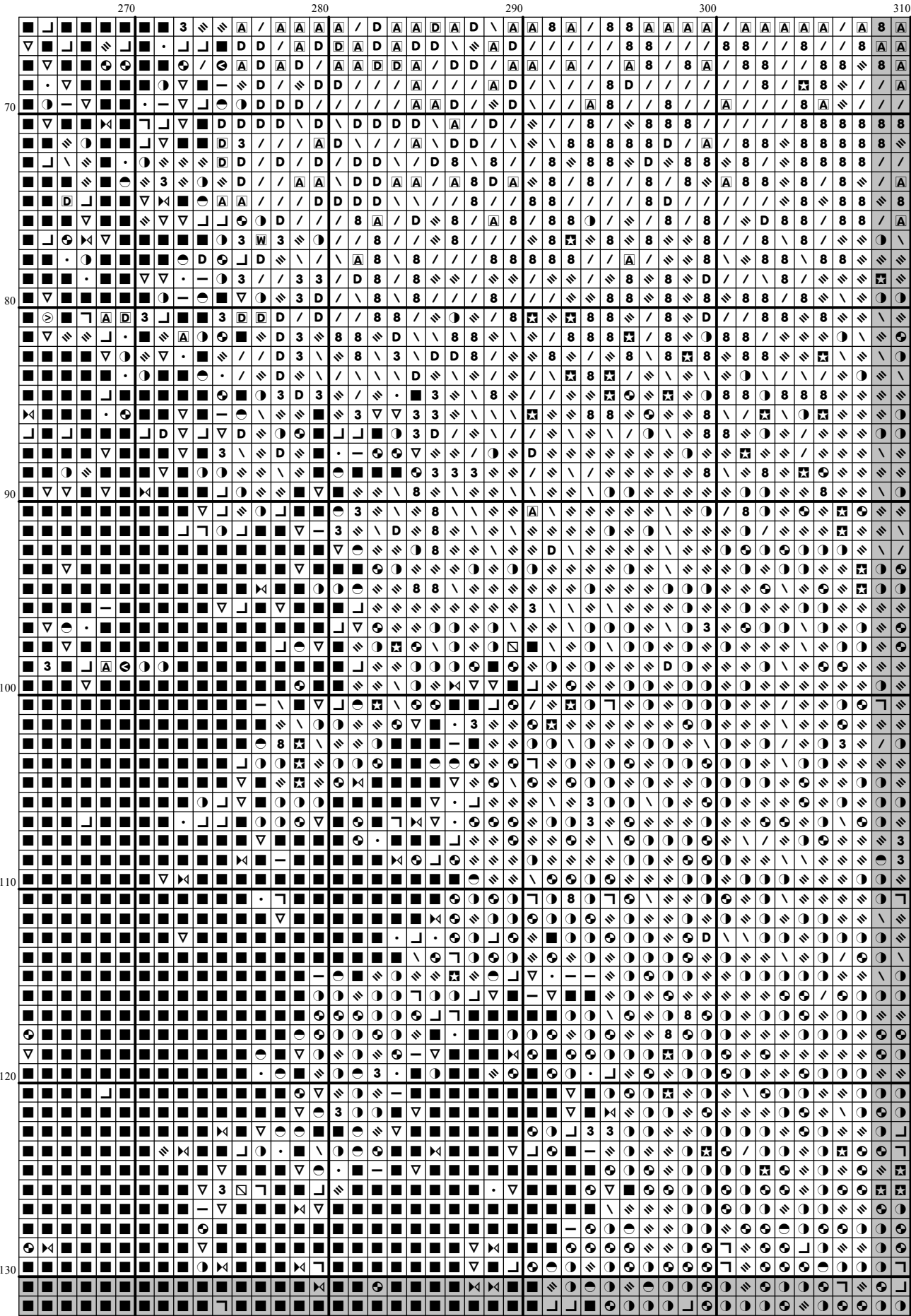


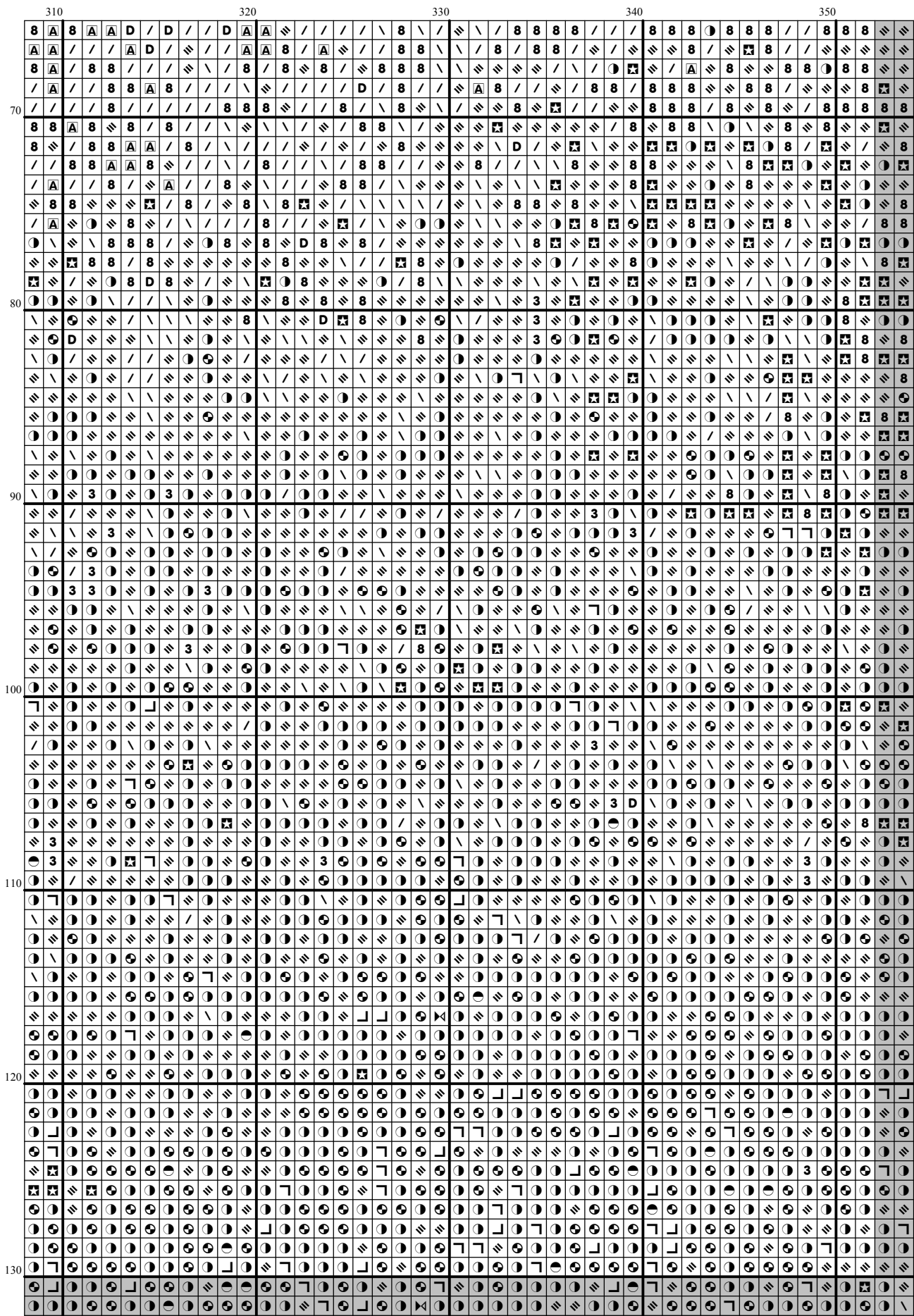


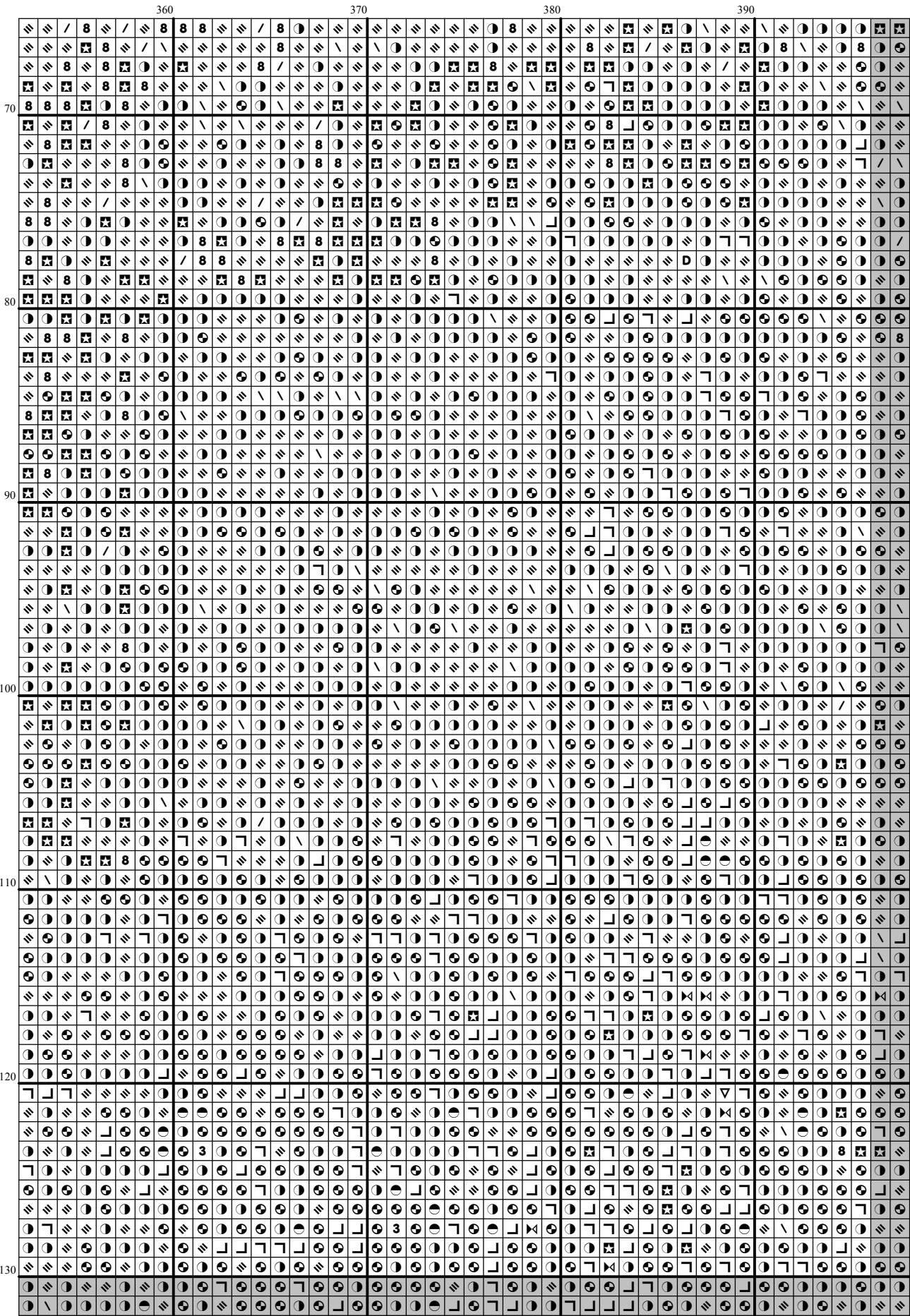


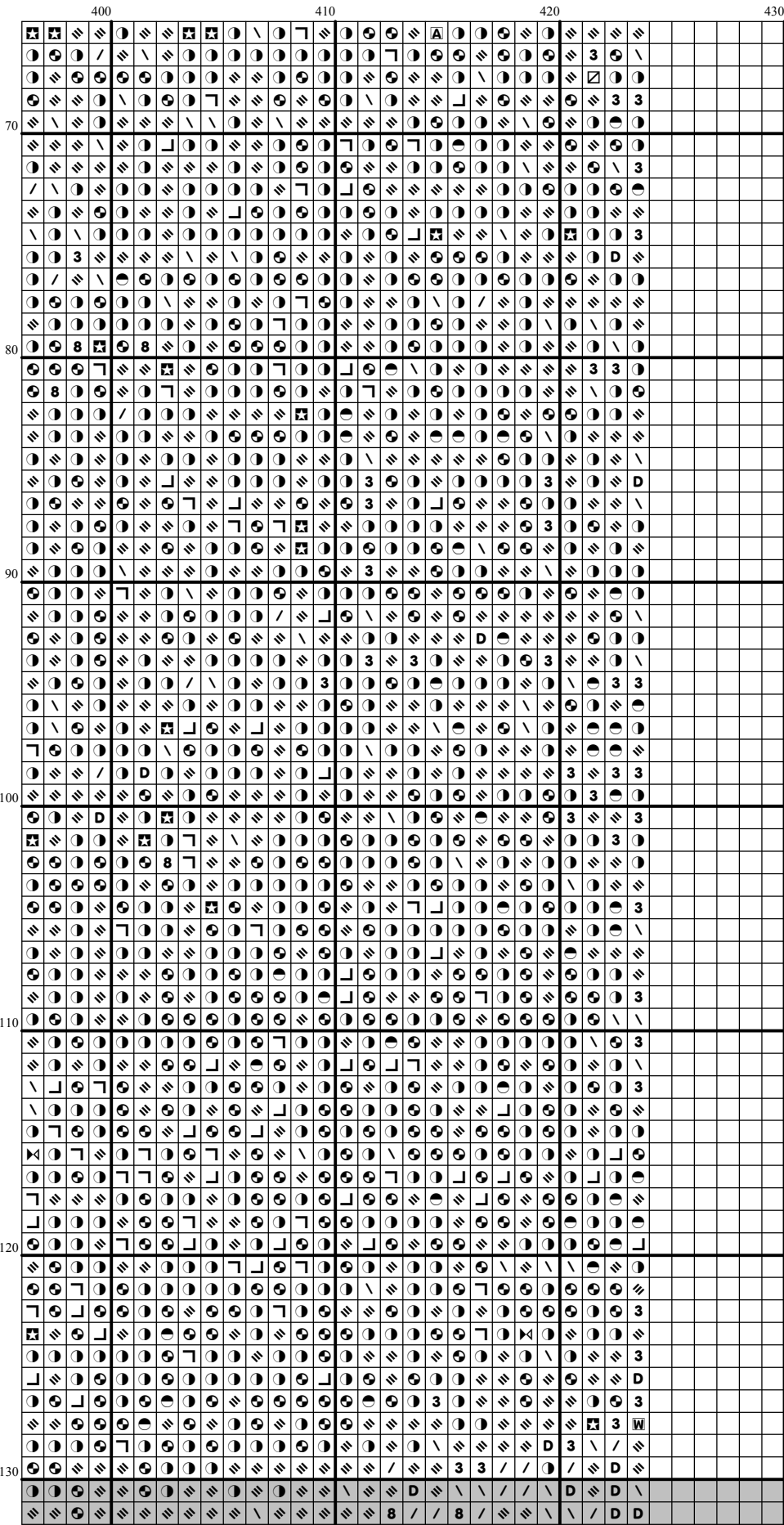
[illegible]

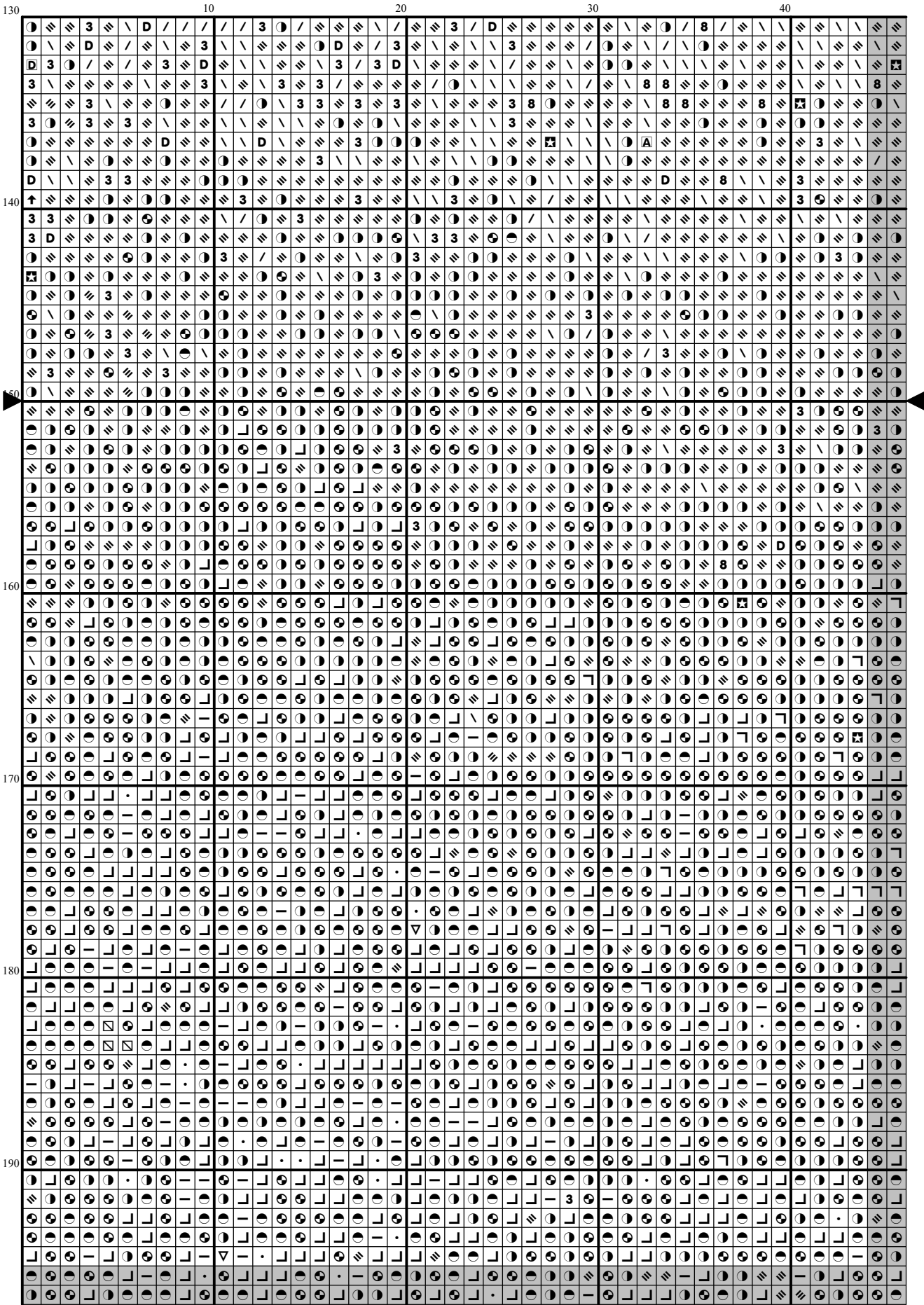


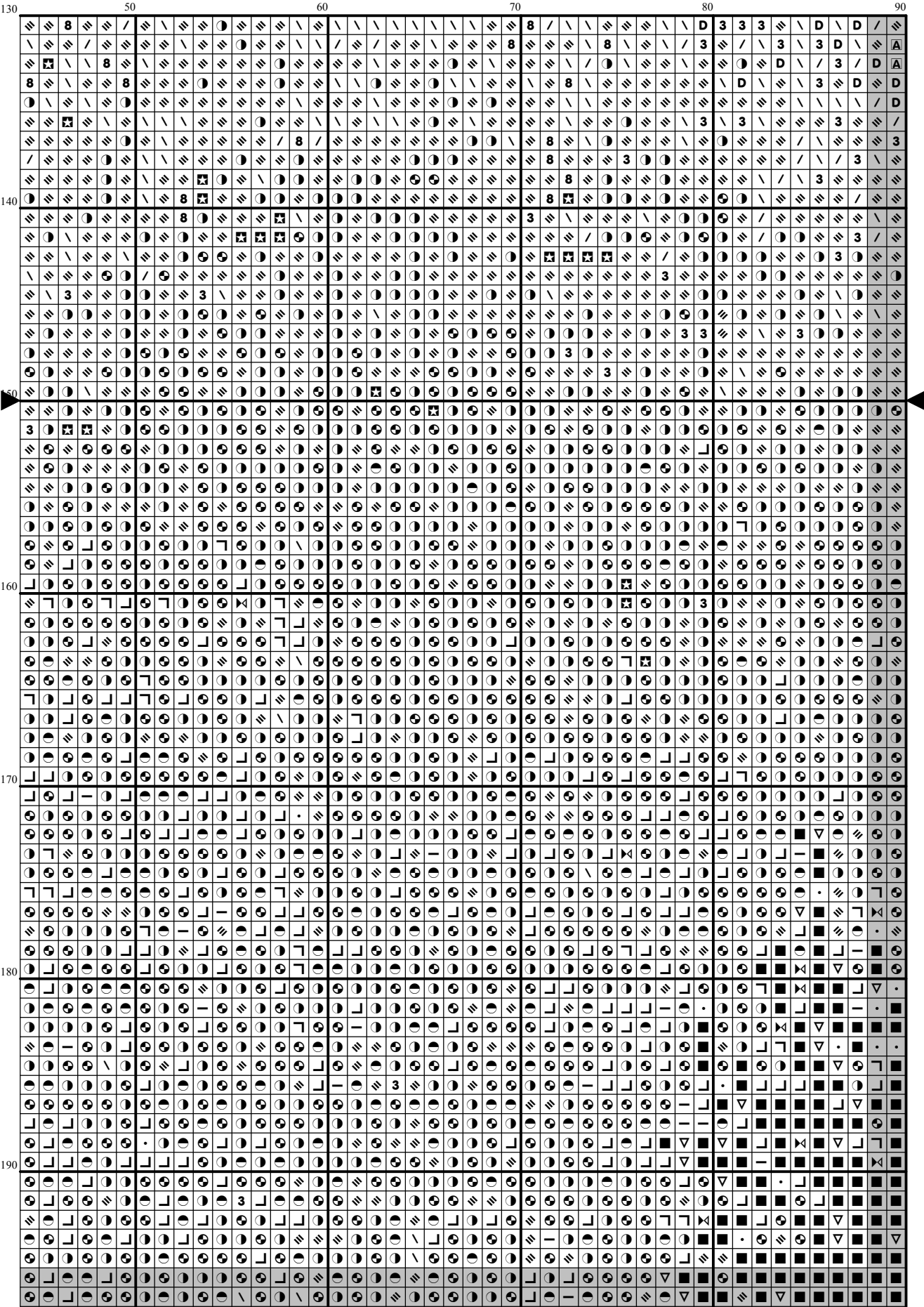


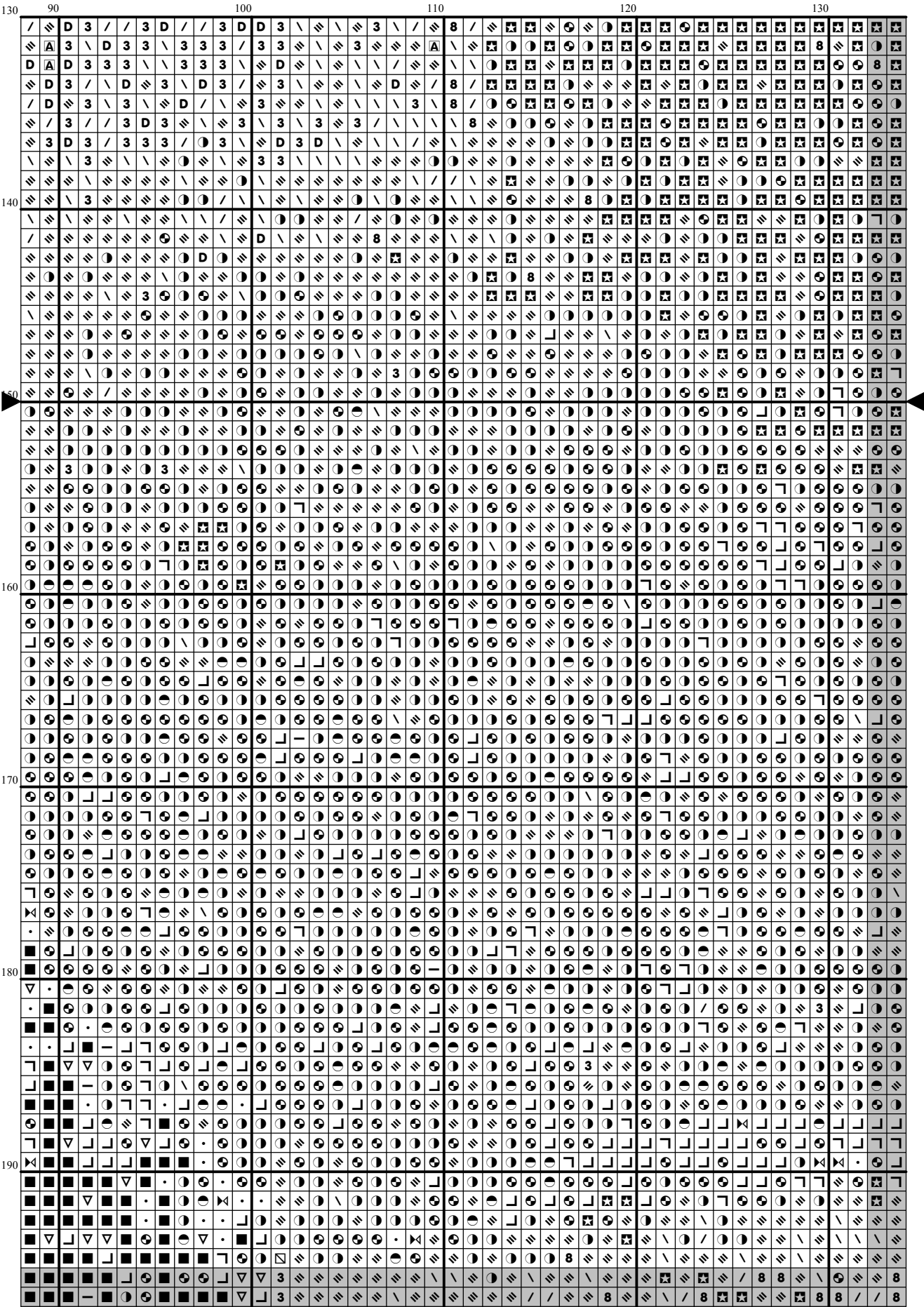


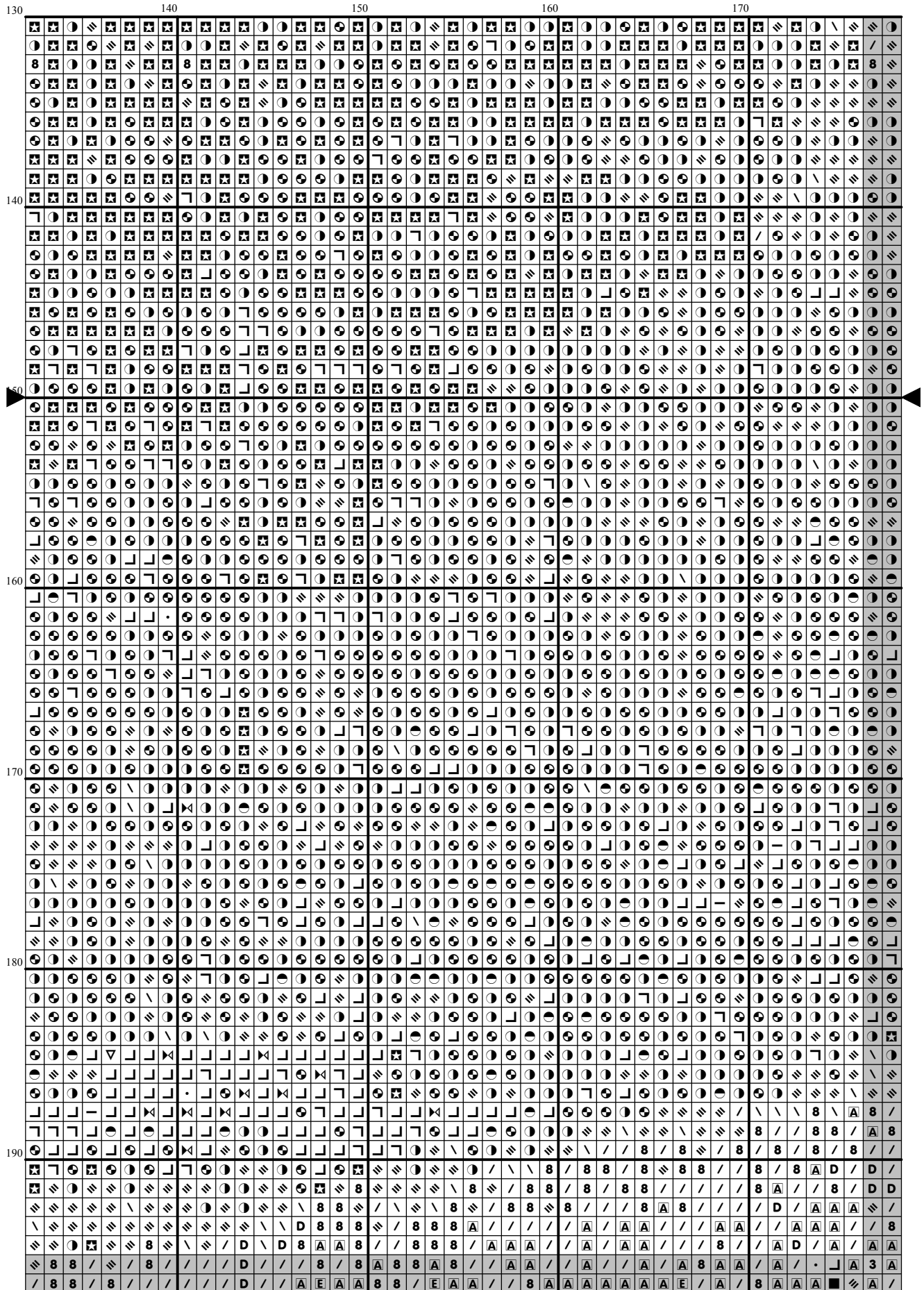


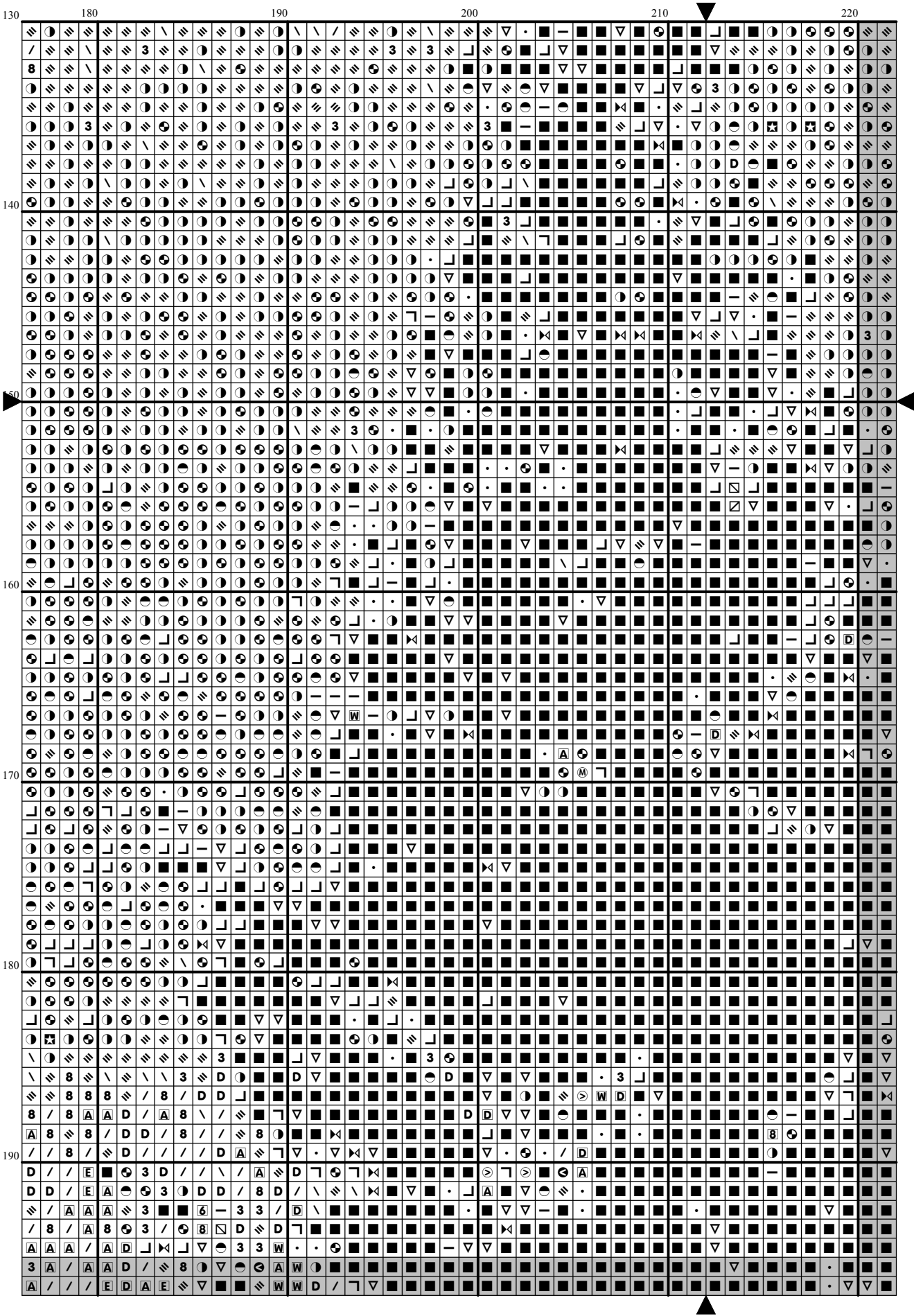


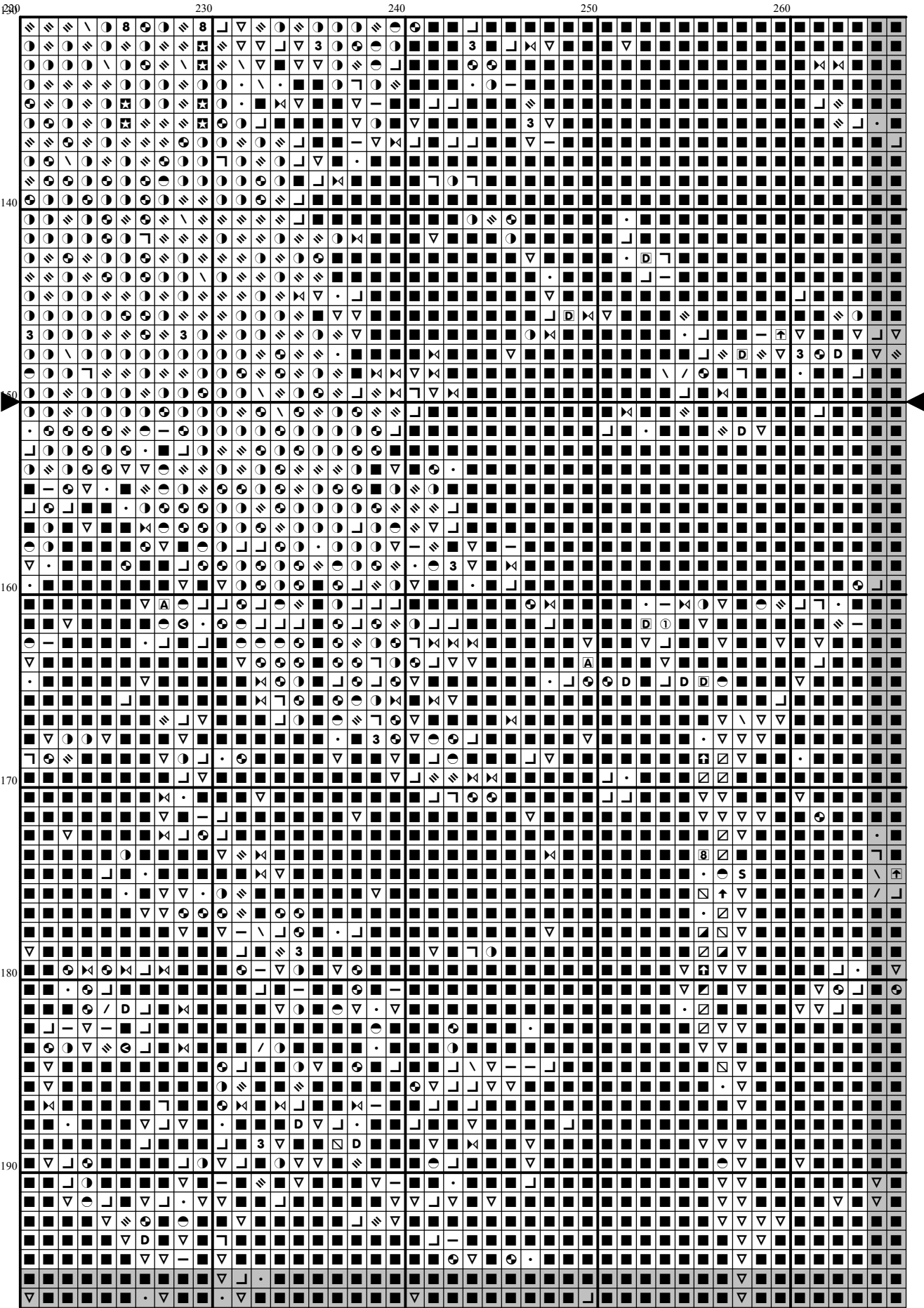


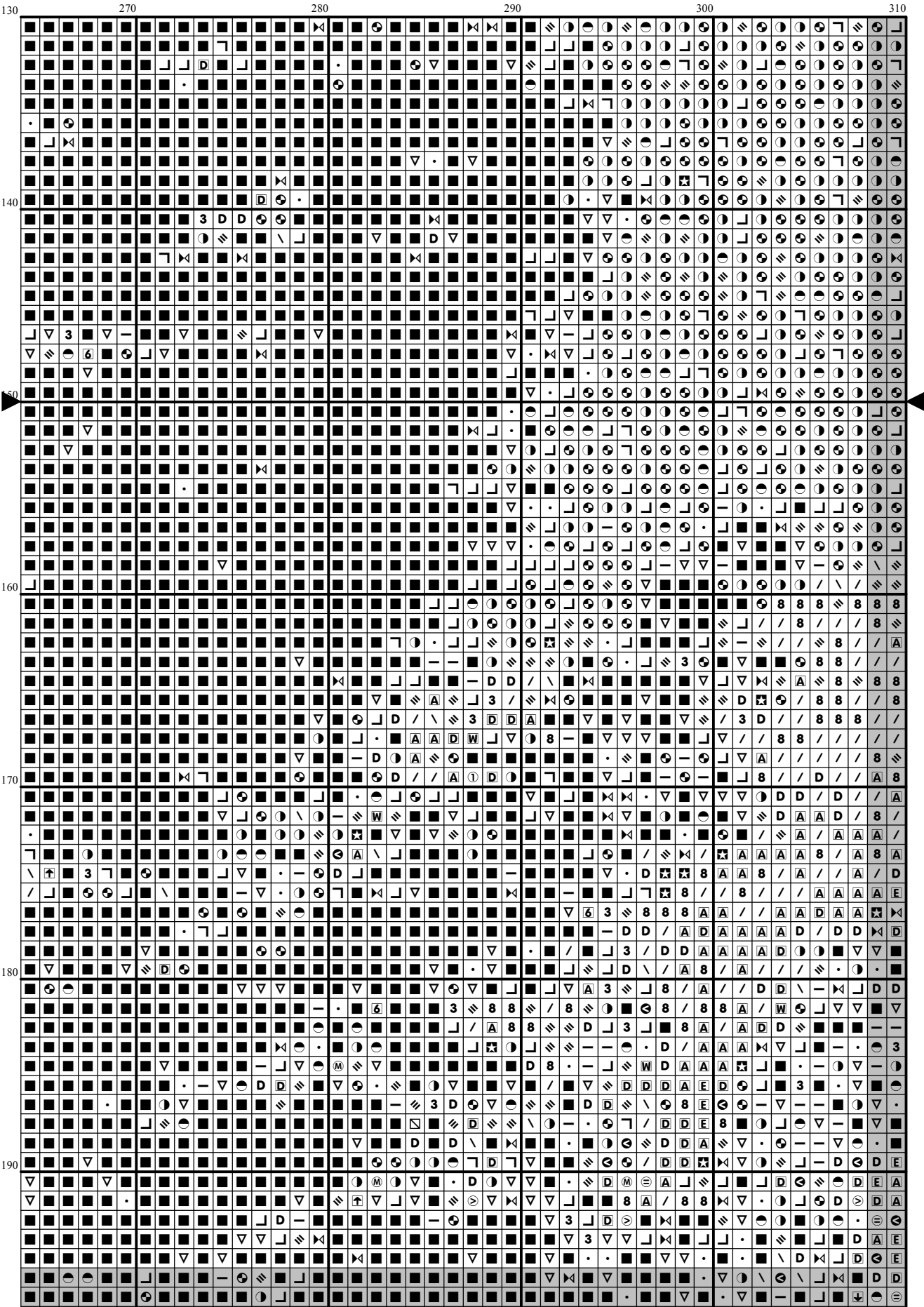


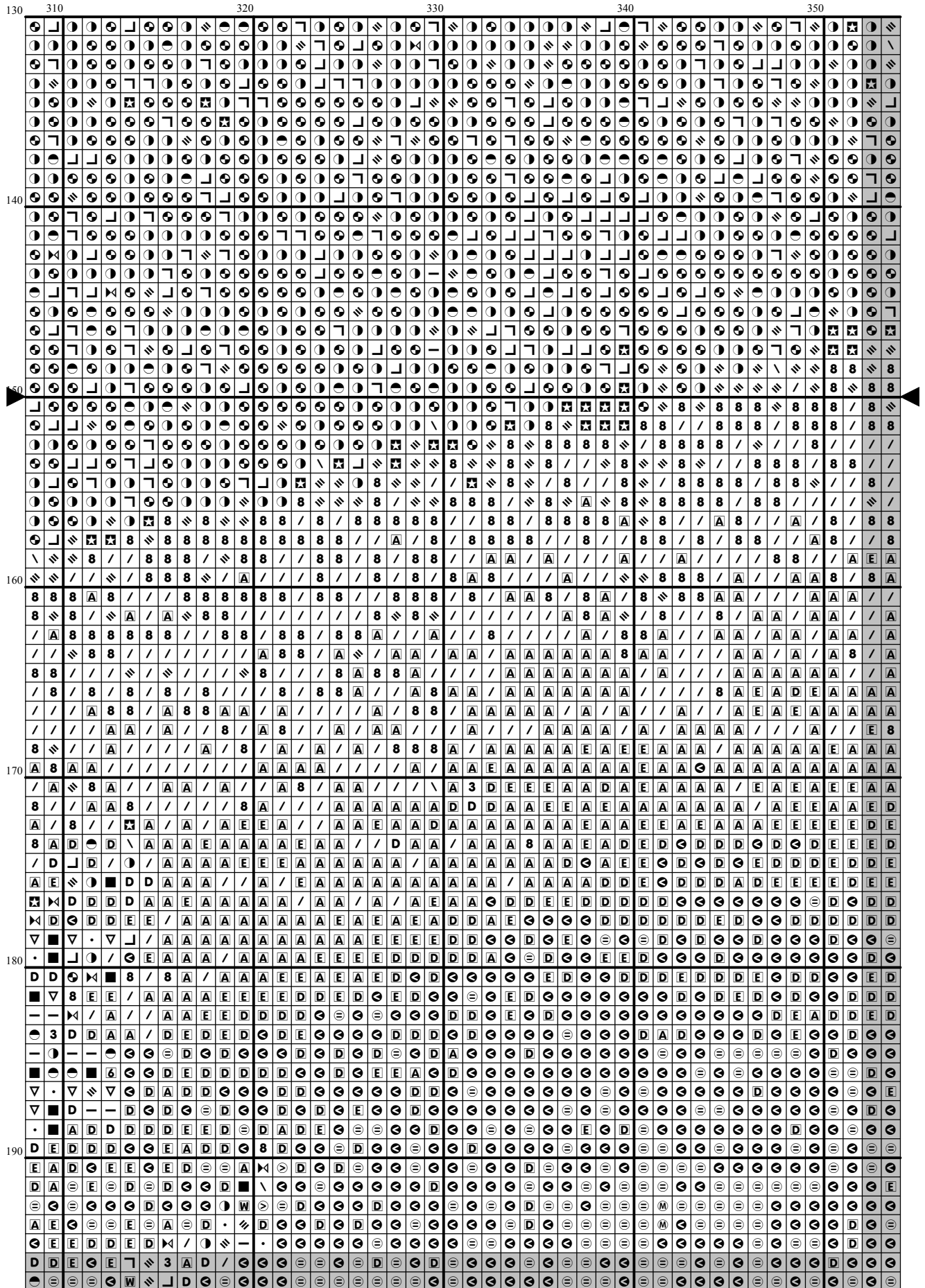


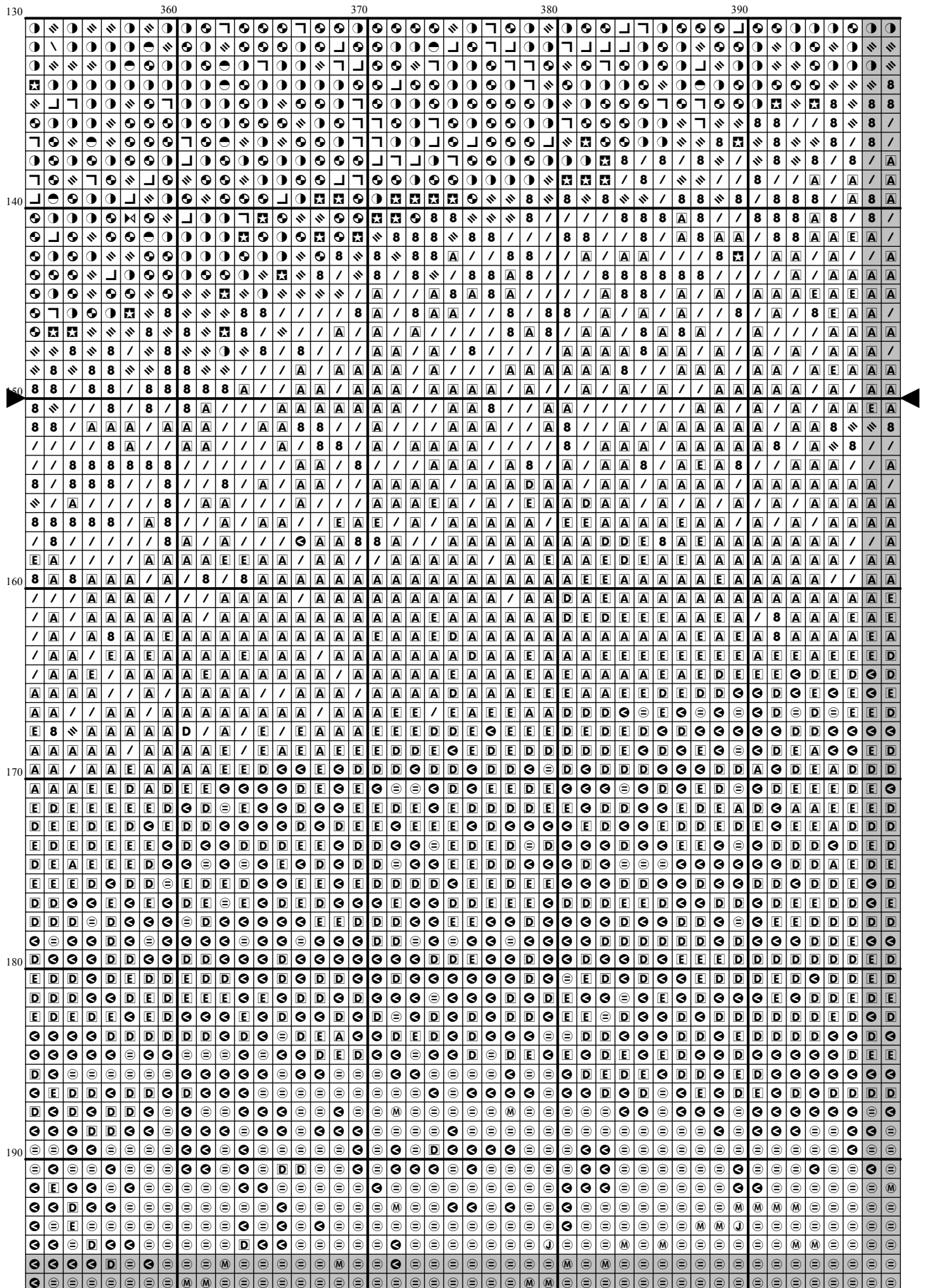


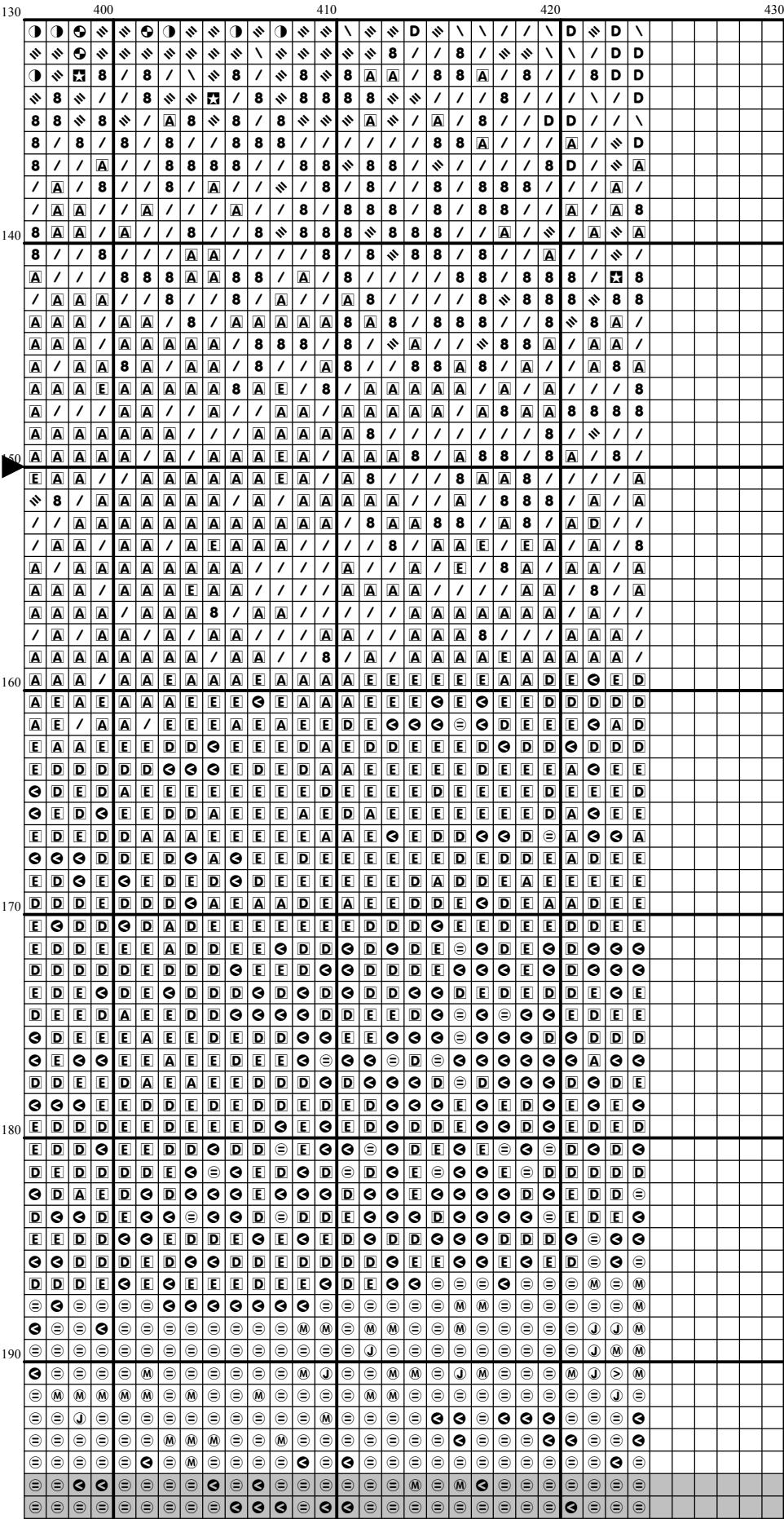


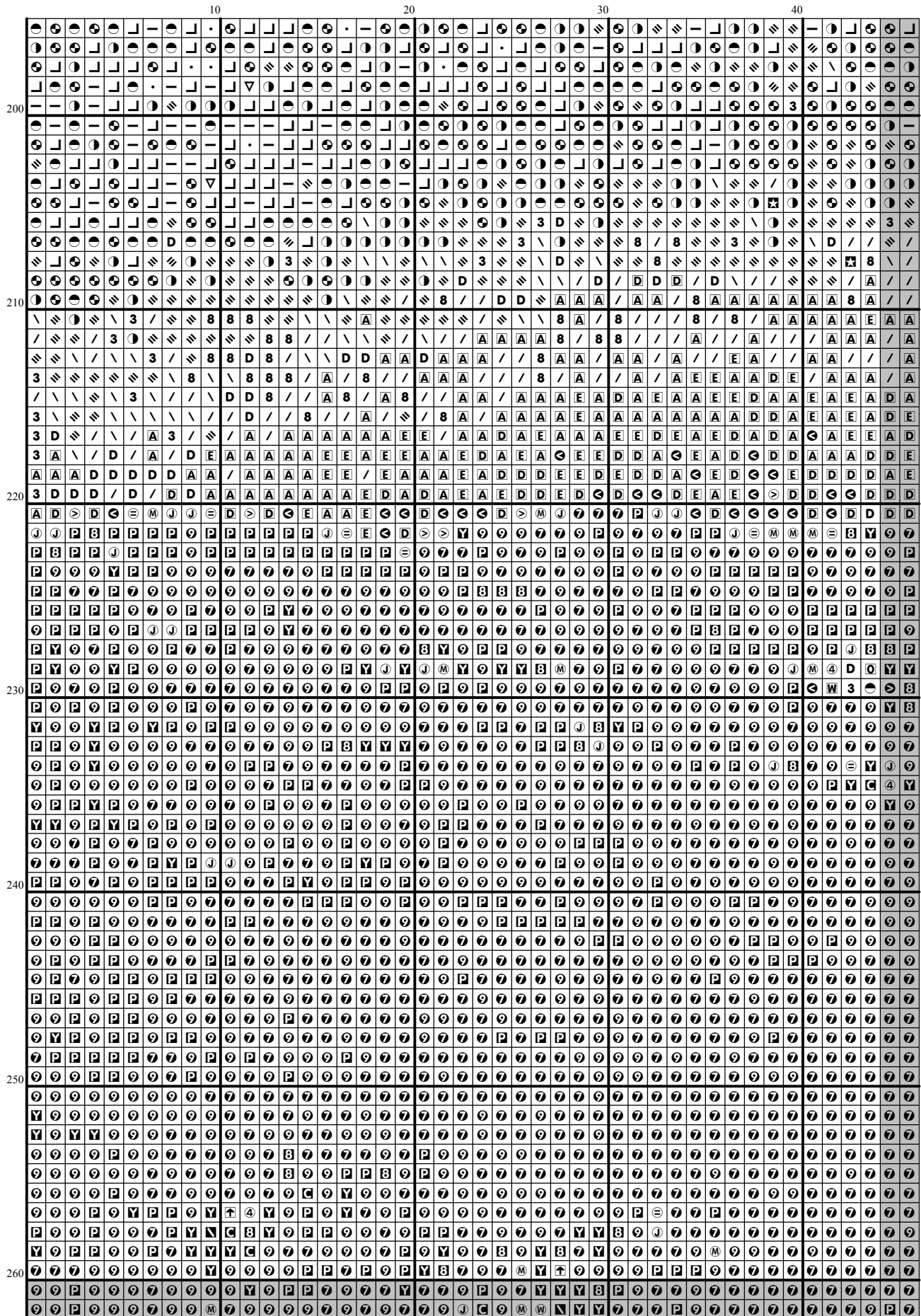


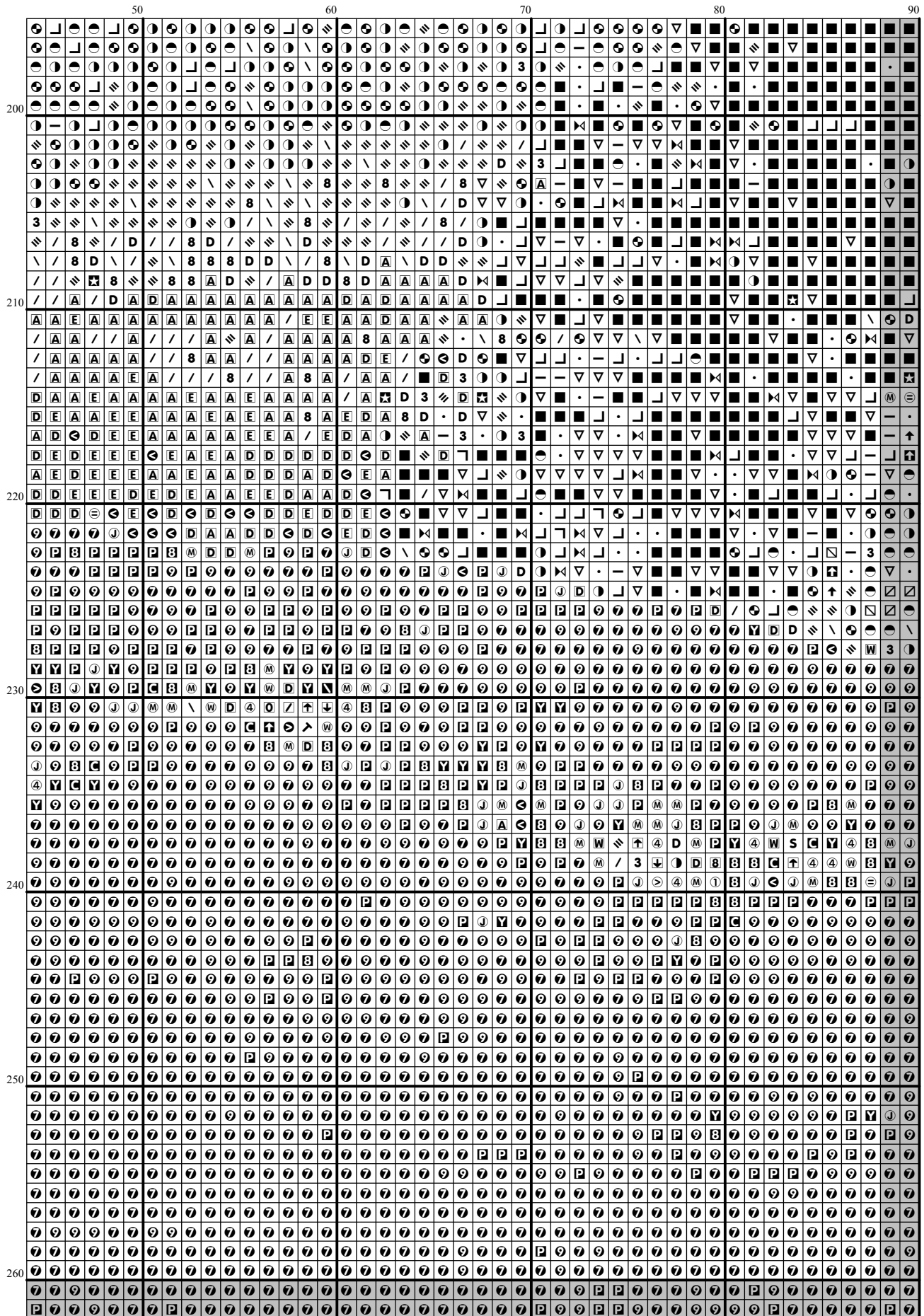


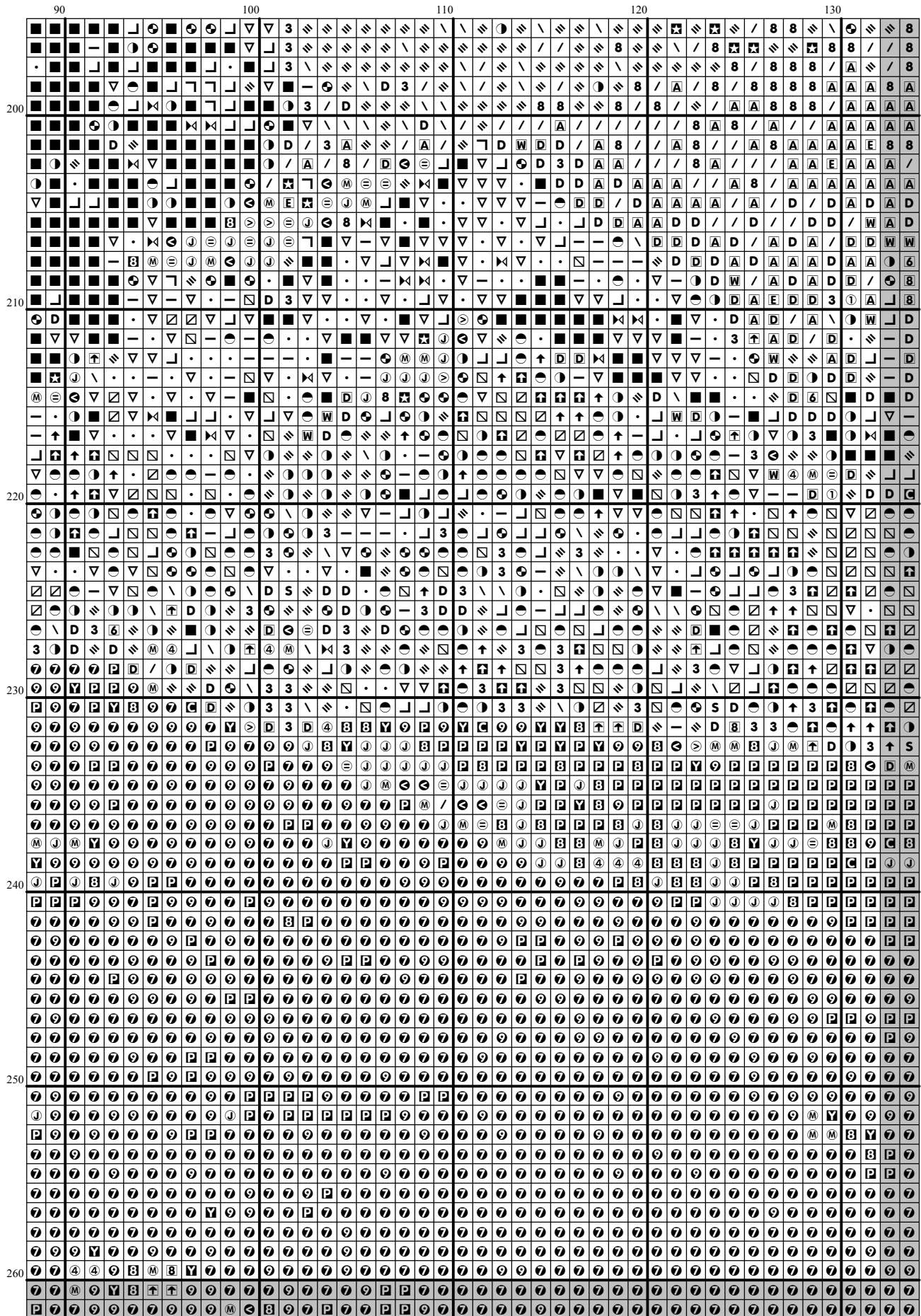




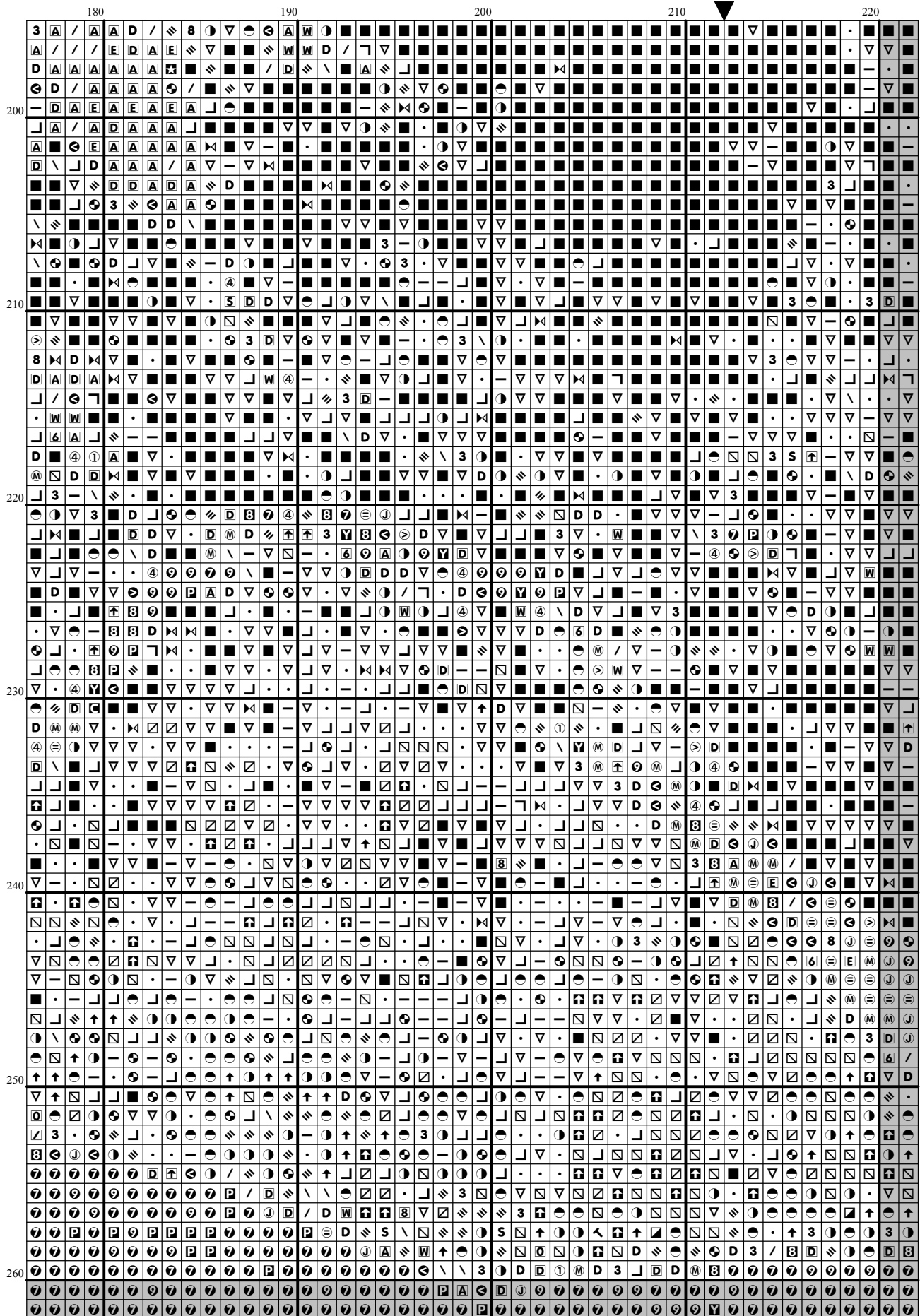


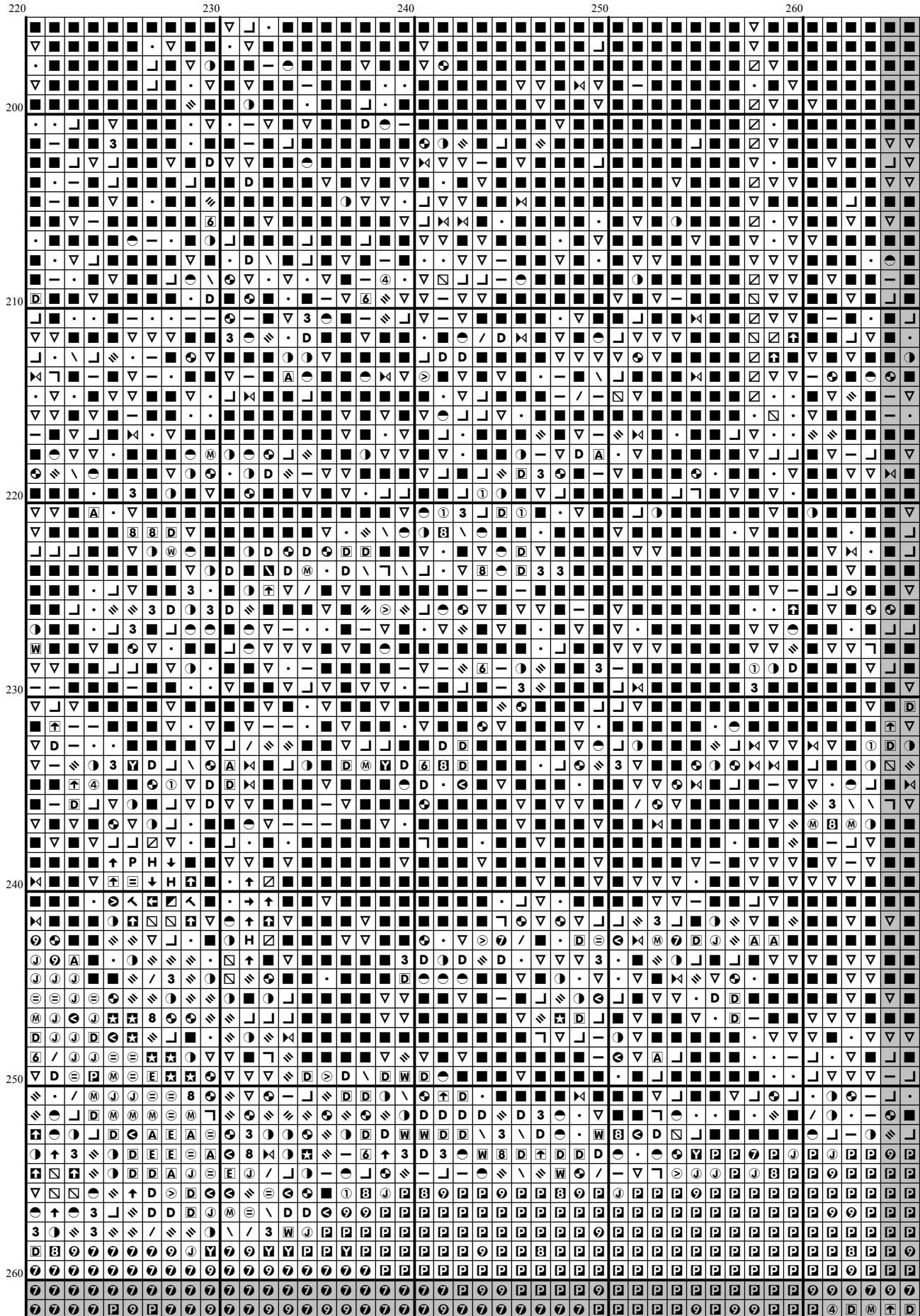


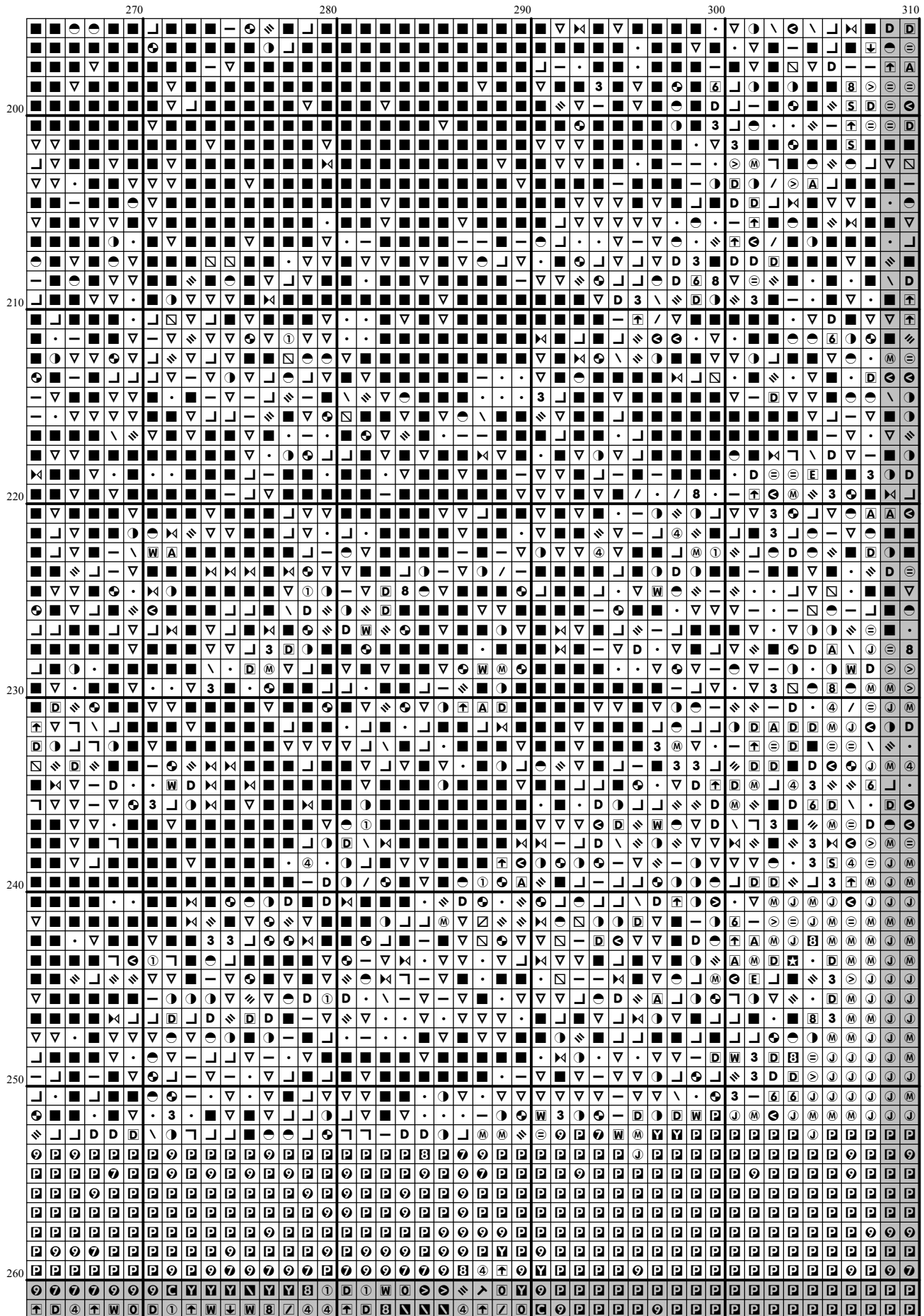




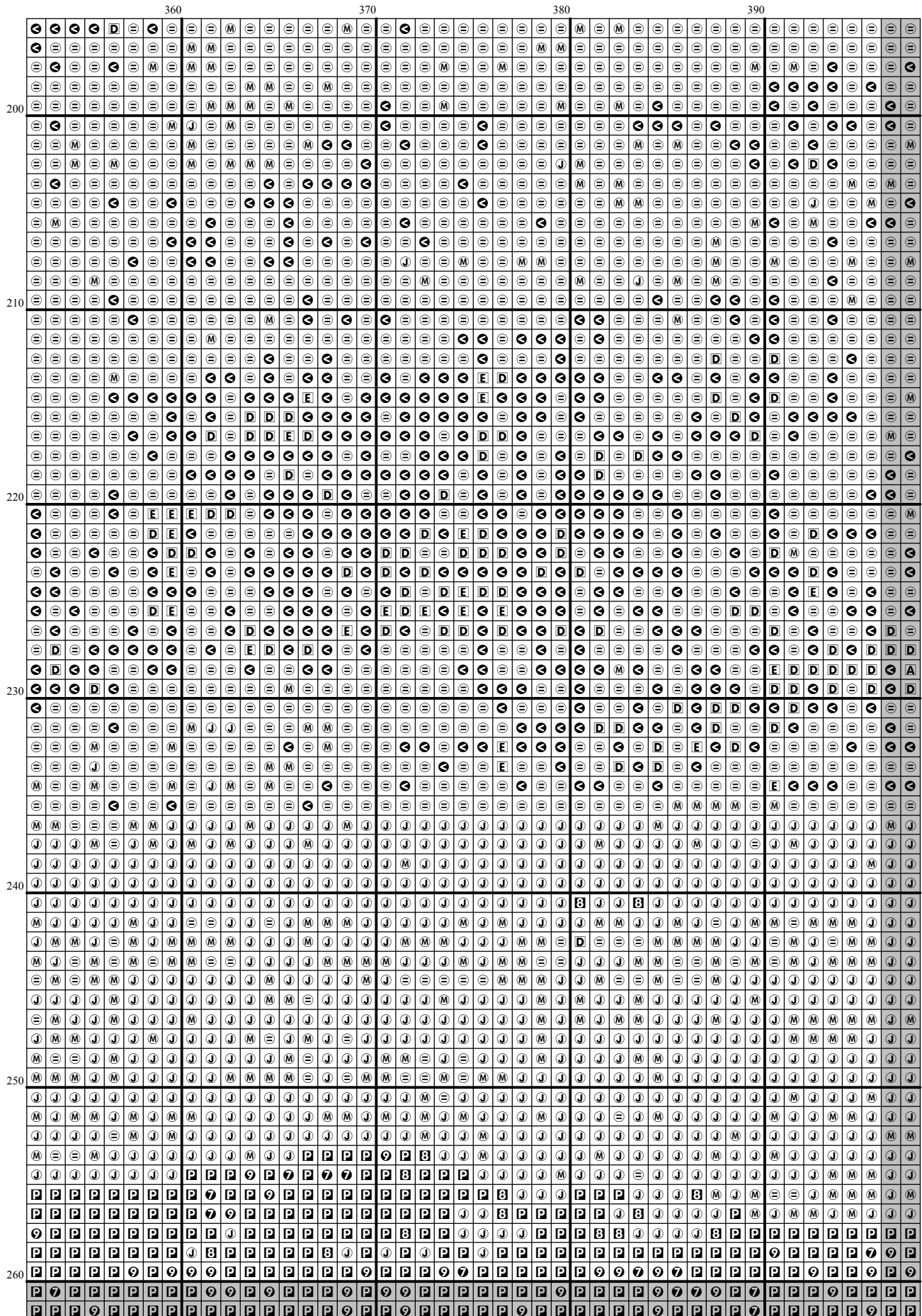
[illegible]



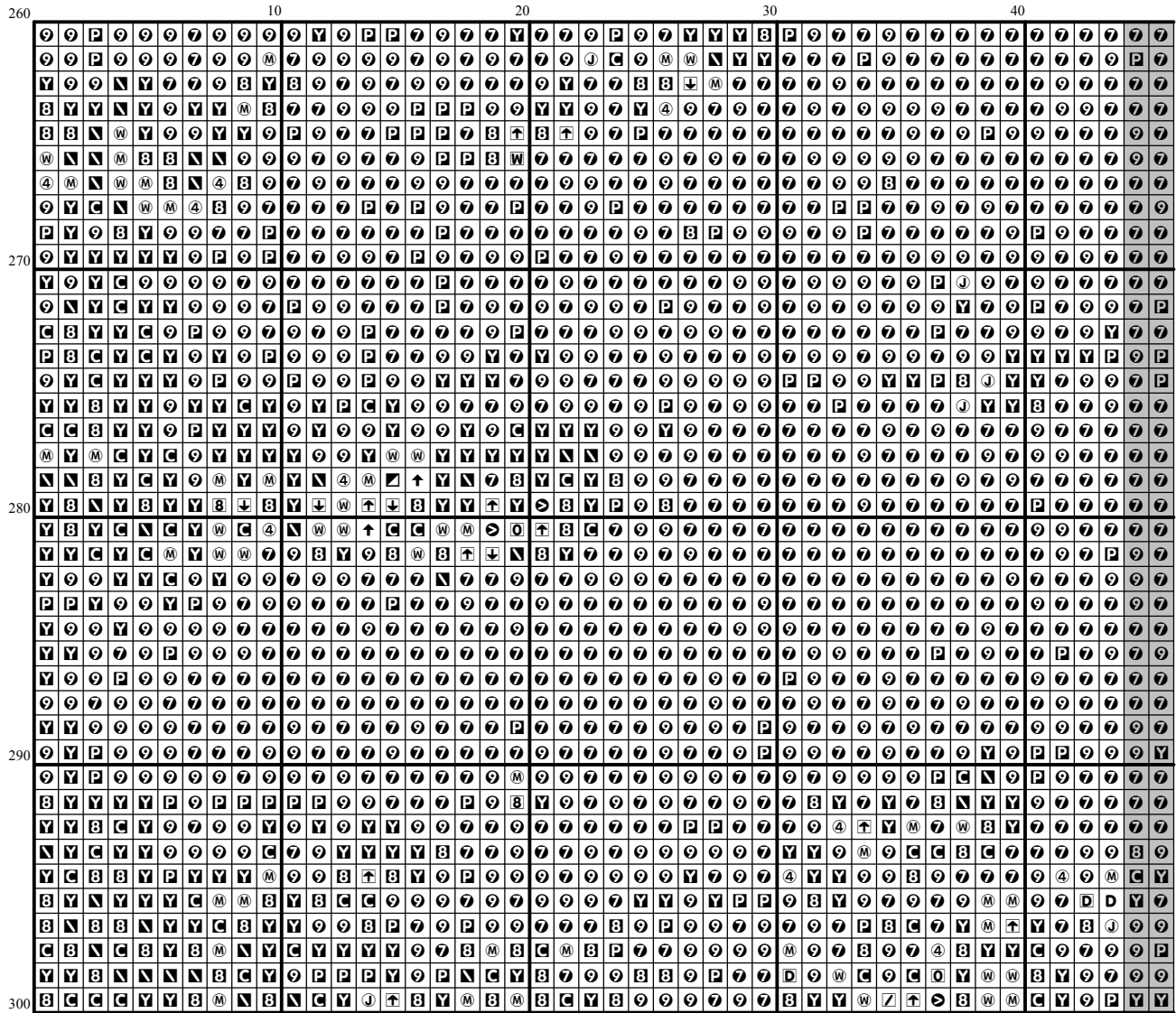




[illegible]



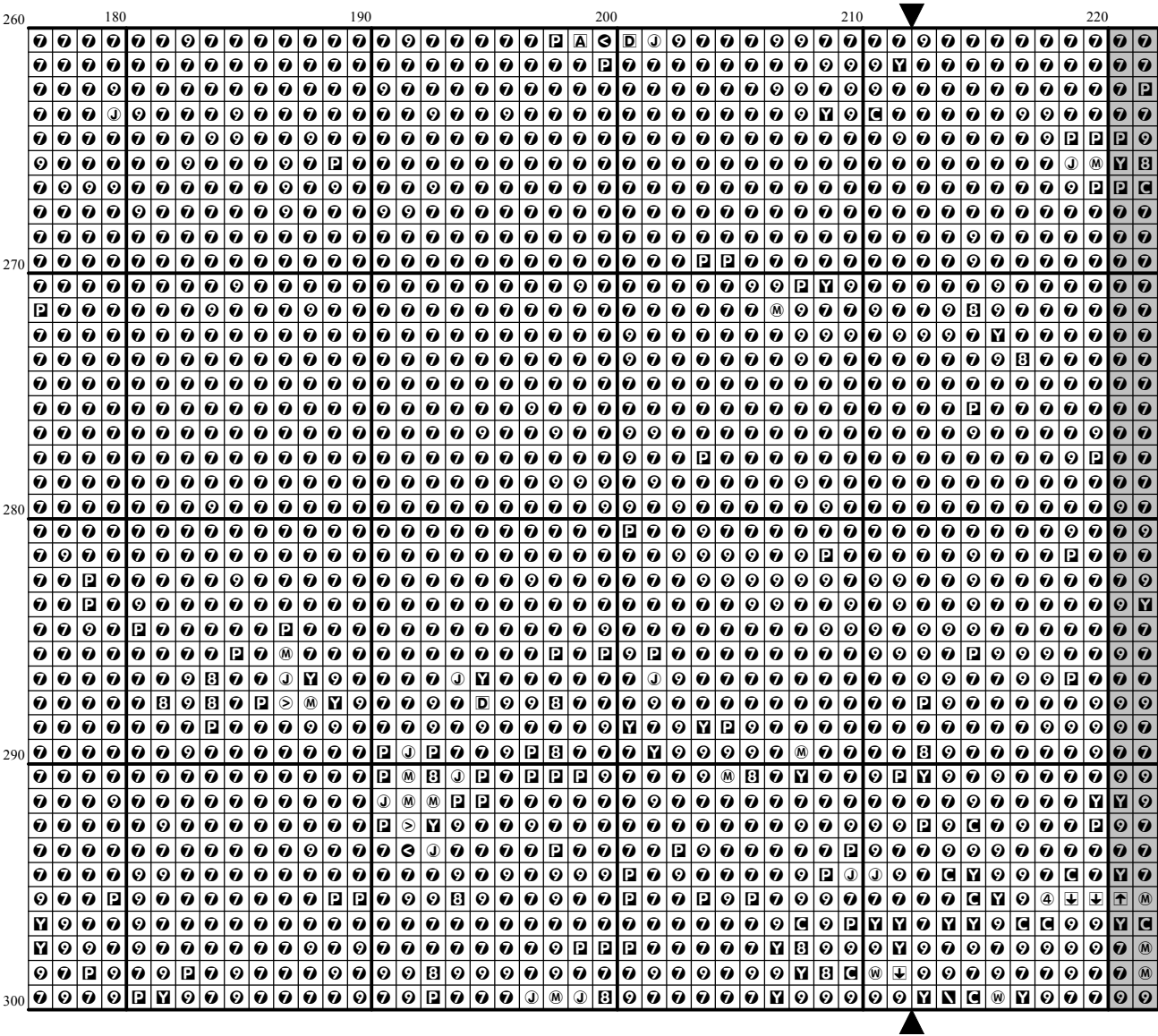
[illegible]

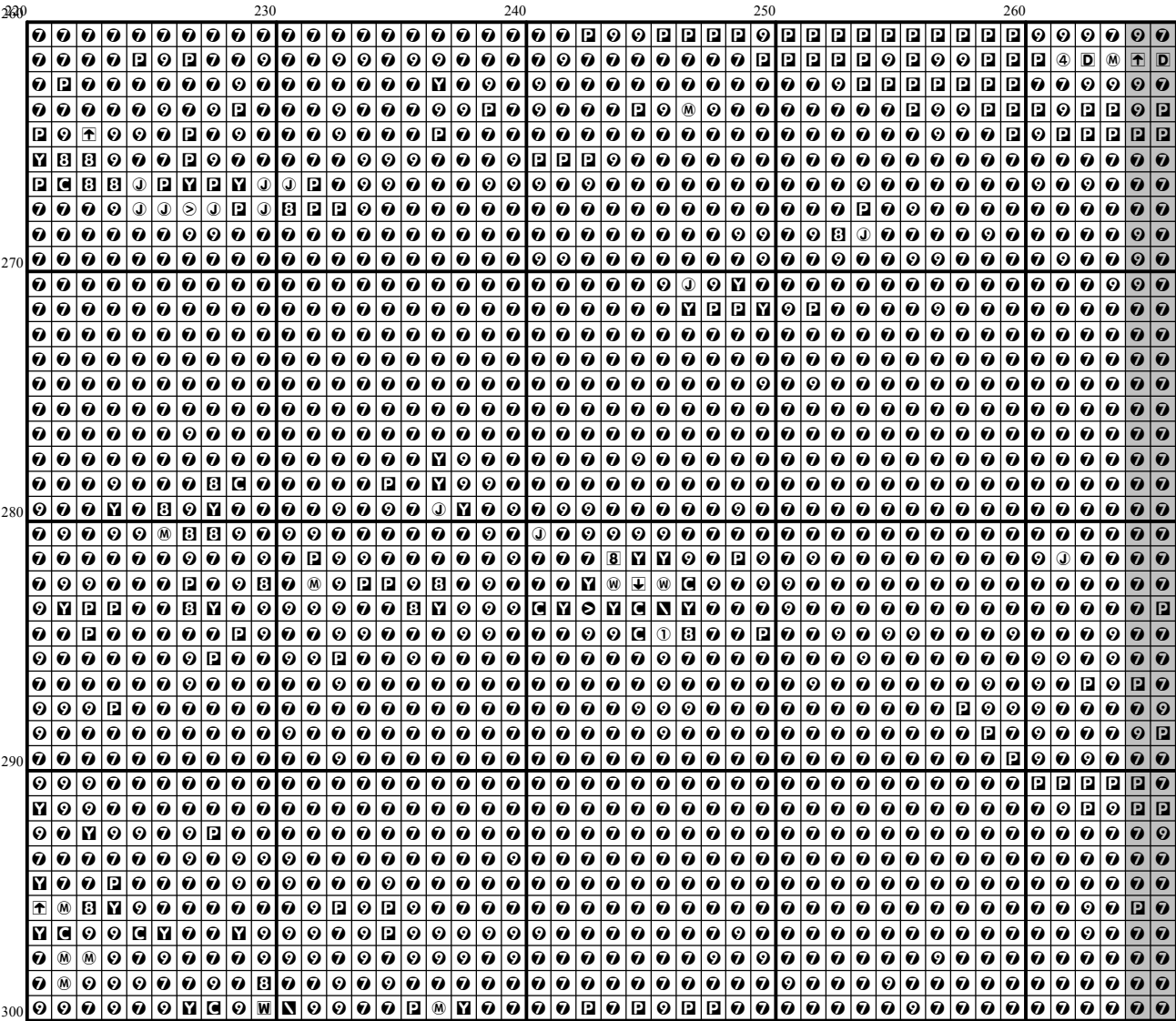


[illegible]

[illegible]







[illegible]



[illegible]

[illegible]

Instructions and Symbol Key for Design "New 285 Winter Landscape"

Fabric: 14 count white Aida

Stitches: 424 x 300 **Size:** 30.29 x 21.43 inches or 76.93 x 54.43 cm

Colours: DMC

Use **2** strands of thread for cross stitch

| Sym | No. | Colour Name | Sym | No. | Colour Name |
|-----|-------|---------------------|-----|-------|---------------------|
| ⊖ | 168 | Mouse grey | / | 169 | Pewter grey |
| ■ | 310 | Black | ⊠ | 317 | Steel grey |
| Ⓐ | 318 | Granite grey | ⌒ | 413 | Iron grey |
| 8 | 414 | Lead grey | ⊙ | 415 | Chrome grey |
| ⊞ | 433 | Chocolate brown | \ | 451 | Shell pink grey |
| Ⓜ | 452 | Pigeon grey | ④ | 453 | Turtledove grey |
| 6 | 523 | Ash green | Ⓢ | 524 | Light grey green |
| ⊕ | 535 | Stone grey | ⊞ | 543 | Shell beige |
| → | 610 | Dark golden brown | P | 612 | String brown |
| ↗ | 640 | Green grey | ⊙ | 642 | Earth grey |
| ⬆ | 644 | Light green grey | ● | 645 | Dark steel grey |
| ≡ | 646 | Platinum grey | D | 647 | Rock grey |
| ⓓ | 648 | Pepper grey | Y | 712 | Cream |
| ⓐ | 762 | Pearl grey | ■ | 801 | Mink brown |
| Ⓝ | 822 | Cotton cream | Ⓜ | 839 | Root brown |
| ↖ | 840 | Hare brown | ⓐ | 841 | Deer brown |
| ⬇ | 842 | Beige rope | ⌒ | 844 | Pepper black |
| Ⓜ | 898 | Teak brown | ⓔ | 927 | Oyster grey |
| ⊙ | 928 | Light pearl grey | • | 934 | Algae green |
| — | 935 | Undergrowth green | Ⓢ | 3021 | Cliff grey |
| 3 | 3022 | Elephant grey | 8 | 3023 | Light platinum grey |
| ① | 3024 | Pale steel grey | Ⓢ | 3031 | Dark Mocha brown |
| ⓐ | 3032 | Dark antique silver | Ⓜ | 3033 | Antique silver |
| Ⓜ | 3072 | Pale pearl grey | ≡ | 3363 | Herb green |
| ▽ | 3371 | Ebony | ⓔ | 3756 | Cloud blue |
| Ⓢ | 3782 | Gingerbread brown | ● | 3787 | Wolf grey |
| ↑ | 3790 | Cappuccino brown | Ⓜ | 3799 | Anthracite grey |
| S | 3861 | Light taupe | ⬇ | 3862 | Mocha brown |
| H | 3863 | Otter brown | ⓔ | 3864 | Light mocha brown |
| ⊙ | 3865 | Winter white | 8 | 3866 | Garlic cream |
| Ⓢ | ECRUT | ECRUT | Ⓢ | BLANC | BLANC |

This chart has been designed and printed with our best intentions of being without mistakes. However, the possibility of human error, printing mistakes or the variation of individual stitching does exist, and we regret that we cannot be responsible for this.

Note: The shaded blocks on the chart represent overlapping stitches.
Copyright © Classic Cross Stitch 2007 All rights reserved.